

FGD 458-3-10

9

Gustave Doret

Tell

Harpes.

LOCATION

PROPRIÉTÉ DE LA MAISON FÉETISCH
à LAUSANNE

Cette musique ne peut être
ni vendue, ni prêtée, ni copiée.

1

Harpes

Cell

Gustave Doret

LOCATION

PROPRIÉTÉ DE LA MAISON FÉTISCH
à LAUSANNE

Cette musique ne peut être
ni vendue, ni prêtée, ni copiée.

Introduction

Lento risoluto

Ch^t
No-tre

Harpe

voix sonne en - cor dans vos

voix — la 7 mf

do 7

mf

pi⁵ do⁴ la³ re²

2

ch^t
Nous vous ren -

3

-dons i-ci la sauvage e-po-pe-e. 6

si⁴ fa³ la² do¹ re¹

Harpe

f

4

comp: ut

10 11

g⁴ ti³ to in C-dur

Moderato

Harpe

Handwritten musical notation for the first system, featuring treble and bass staves with notes, rests, and dynamic markings like *mf*.

Handwritten musical notation for the second system, including triplets and various accidentals.

Handwritten musical notation for the third system, showing complex chordal structures and accidentals.

Handwritten musical notation for the fourth system, featuring sustained chords and a repeat sign.

Handwritten musical notation for the fifth system, including a circled number 5 and a fermata.

Handwritten musical notation for the sixth system, featuring a glissando and a final cadence.

Risoluto

6

Lento

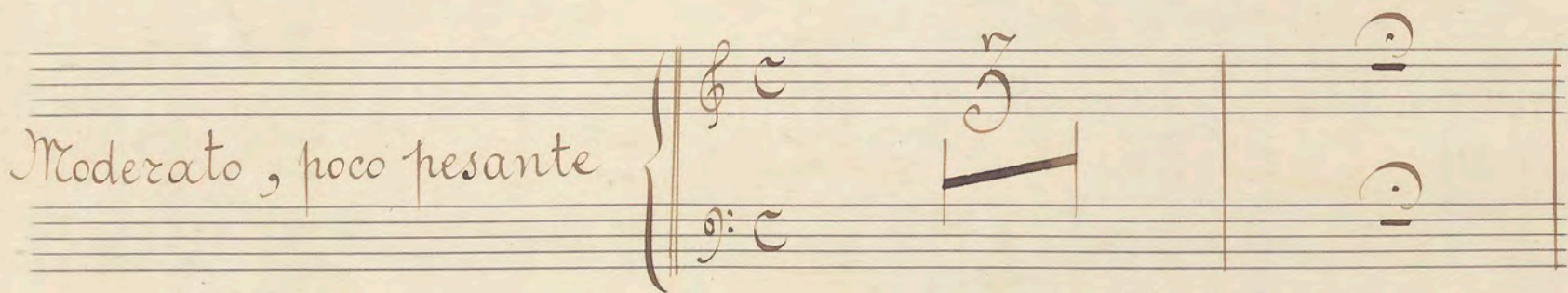
Ch.

7

Harpe

Acte I. Nuages
Scène II. Chant des Pères

Moderato, poco pesante



3) *f* amplif

8



Plus lent *Allegro*

pour finir

Tempo I

Acte II

Crépuscule

Lento

in F. dur

Y ti to

10 FA major

Handwritten musical notation for the first system, featuring treble and bass staves with notes, rests, and dynamic markings like *mf*.

Handwritten musical notation for the second system, including notes, rests, and dynamic markings such as *si b*, *pi b*, and *si b solo*.

Handwritten musical notation for the third system, featuring notes, rests, and dynamic markings like *re b*, *so b*, and *pp*.

Handwritten musical notation for the fourth system, including notes, rests, and dynamic markings such as *lab*, *uib*, and *pp*.

Handwritten musical notation for the fifth system, featuring notes, rests, and dynamic markings like *fa #*, *la 7 ga*, and *p*.

Handwritten musical notation for the sixth system, including notes, rests, and dynamic markings such as *Mit 7*, *ga*, and *cres*.

uib

Handwritten musical notation on a grand staff. The notation includes a treble and bass clef, a key signature of two flats (B-flat and E-flat), and a common time signature (C). The music features a melodic line in the treble and a harmonic accompaniment in the bass. A blue circle with the number 11 is written above the staff. The word "cresc:" is written above the staff, and "solb" is written below the staff. The word "mit" is written above the staff, and "mit" is written below the staff. The word "K" is written below the staff.

Handwritten musical notation on a grand staff. The notation includes a treble and bass clef, a key signature of two flats (B-flat and E-flat), and a common time signature (C). The music features a melodic line in the treble and a harmonic accompaniment in the bass. The word "solb" is written above the staff, and "la. b" is written below the staff.

Handwritten musical notation on a grand staff. The notation includes a treble and bass clef, a key signature of two flats (B-flat and E-flat), and a common time signature (C). The music features a melodic line in the treble and a harmonic accompaniment in the bass. The word "i. b" is written above the staff, and "p. b" is written below the staff.

Handwritten musical notation on a grand staff. The notation includes a treble and bass clef, a key signature of two flats (B-flat and E-flat), and a common time signature (C). The music features a melodic line in the treble and a harmonic accompaniment in the bass. A blue circle with the number 12 is written above the staff. The word "mi b" is written above the staff, and "solb" is written below the staff. The word "la b" is written above the staff, and "la b" is written below the staff. The word "ti" is written above the staff, and "ti" is written below the staff.

tutti *pp*

tutti

hib
reg

lab

lab

lab

mf

reb

reb

RE b

sib

13

Handwritten musical notation on a grand staff. The right hand features a series of chords and arpeggios, with a crescendo hairpin. The left hand plays a steady bass line. Handwritten notes include *pp* at the beginning and *rub. sib. 2e 7* in the middle.

Handwritten musical notation on a grand staff. The right hand has a melodic line with a crescendo hairpin. The left hand has a bass line. Handwritten notes include *sib* and *pp* on the left, and *1. 4* in the middle.

Handwritten musical notation on a grand staff. The right hand has a melodic line with a crescendo hairpin. The left hand has a bass line. Handwritten notes include *pp* and *sib* on the left, *dim.* in the middle, and *2e 7* on the right.

Handwritten musical notation on a grand staff. The right hand has a melodic line with a crescendo hairpin. The left hand has a bass line. Handwritten notes include *pp* and *sib* on the left, *dim.* in the middle, and *2e 7* on the right. A blue circle with the number 114 is on the left.

Handwritten musical notation on a grand staff. The right hand has a melodic line with a crescendo hairpin. The left hand has a bass line. Handwritten notes include *dim.* in the middle.

Handwritten musical notation on a grand staff. The right hand has a melodic line with a crescendo hairpin. The left hand has a bass line. Handwritten notes include *dim.* in the middle.

Acte III. Introduction

Eace

Scène IV

Chœur de la Révolte

Risoluto

15

Ch^t

Non, non ja -

2b

Harpe ^{rib} _{rib}

- mais! - Nous? cour -

ff

re b

16

Harpe

Ch^t

L'étran -

ff

sol b

sol b

FIN

Handwritten musical score for a piece titled "Lied" (Op. 10, No. 1). The score is written on two staves (treble and bass clef) in 4/4 time. The key signature is one flat (B-flat). The piece is marked *mf* (mezzo-forte). The notation includes various musical symbols such as notes, rests, and dynamic markings. The score is handwritten and appears to be a personal or working draft.

Handwritten musical score for a piece titled "Chant Mais des". The score is written on two staves, Treble and Bass, with a key signature of one flat (B-flat). The time signature is 2/4. The score is divided into two measures, 17 and 18, which are circled in blue. Measure 17 contains a half note G4 in the Treble staff and a half note F4 in the Bass staff. Measure 18 contains a half note G4 in the Treble staff and a half note F4 in the Bass staff. The piece concludes with a double bar line. The title "Chant Mais des" is written in French at the end of the score.

Ch^t 6 LAB

Non, — non — ja — mais, — Nous — cour —

The image shows a handwritten musical score on aged paper. The top staff is a treble clef with a key signature of one sharp (F#) and a common time signature (C). The melody consists of eighth and quarter notes, with some rests. The bottom staff is a bass clef, mostly containing whole rests. The lyrics are written below the staves: 'Non, — non — ja — mais, — Nous — cour —'. To the right of the main score, there is a small section with a treble clef, a key signature of one sharp, and a common time signature, with the notes 'ti' and 'to' written above it. The number '6' and the letters 'LAB' are written in the top right corner.

(20)

f sib FA

3 4 sib

sib sol

(21)

sib fa f

sib RE 6

Finche folge
Ent'acte
letzte Seite

Scène V

Facet

Scène VI

Moderato

16

Simb: *tr* *tr* (25)

Harpe

(b)

(b)

(26) *cht* *rib*

Oh! soir d'hi - - ti to

Harpe

mf

7.

LA t₂

ch^t 27

Yoi - ci la

Harpe

ch^t

Eell — entends-tu?

Harpe

Acte IV

Scène VIII

passé

Moderato

48

Ch^t
anges et che^r-ru-

-bins Venez saintes ar-mées Venez sur les nu-é-es Défendre nos val-le^s - - es!

Harpe

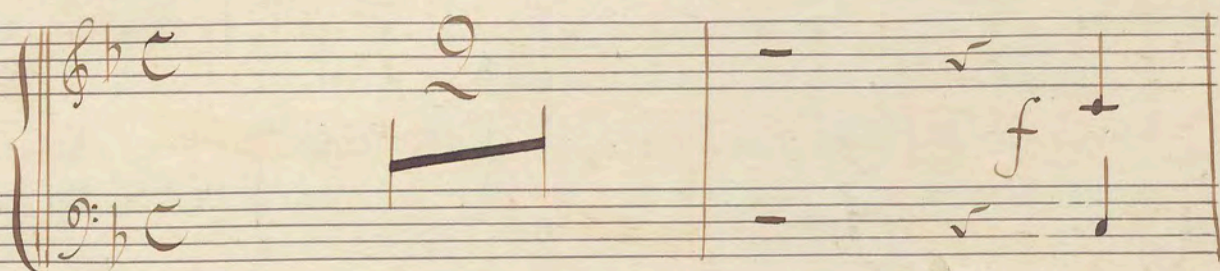
The Harpe part consists of three systems of music. Each system has a treble and bass staff. The first system shows arpeggiated chords in the treble and sustained notes in the bass. The second system continues with similar arpeggiated figures. The third system concludes with a final arpeggiated chord and a sustained note in the bass.

Marche de fifres et Chant de Guerre

Facet

Chœur Final

Tempo marziale



3 Mal

32



Handwritten musical notation on a grand staff. The right hand features a melodic line with a large 'X' above the first measure. The left hand provides a bass accompaniment. Handwritten notes '7 A 4' and 'mi b' are present.

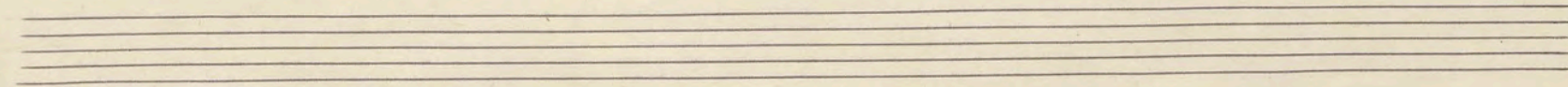
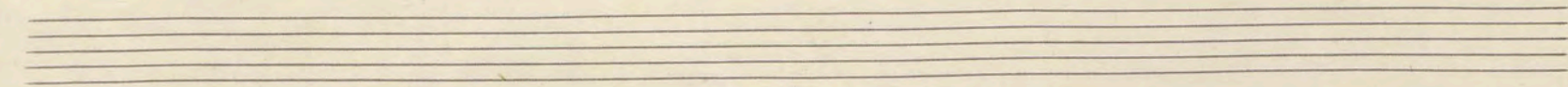
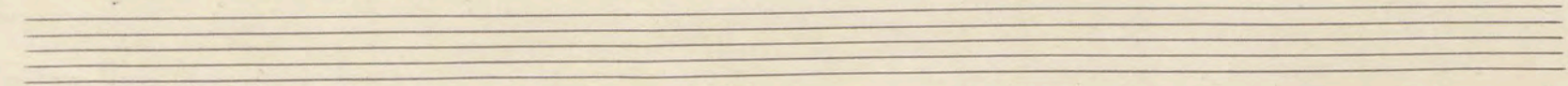
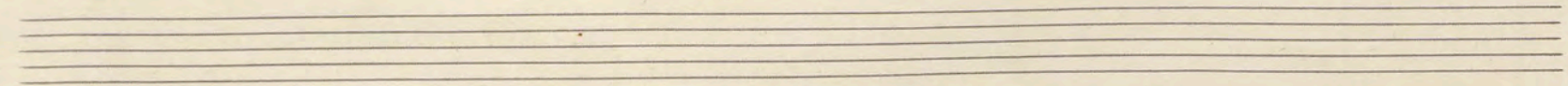
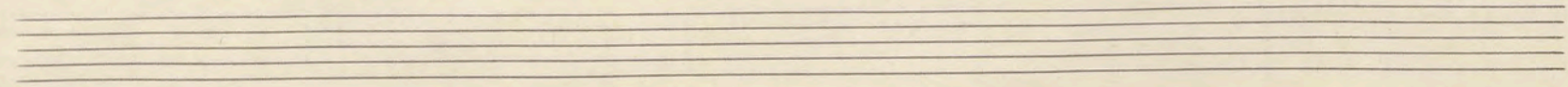
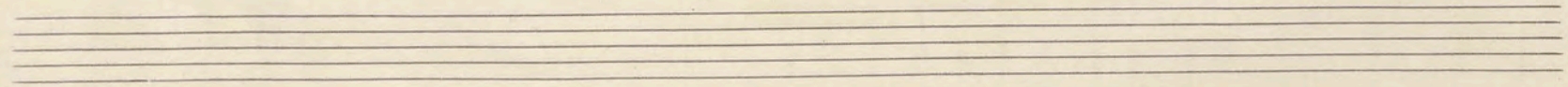
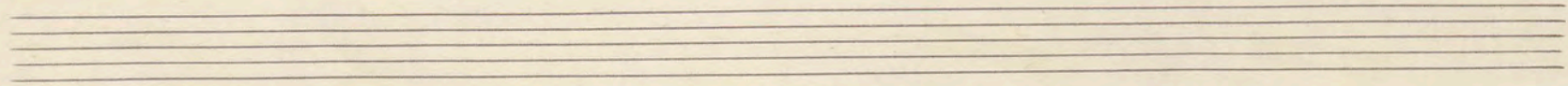
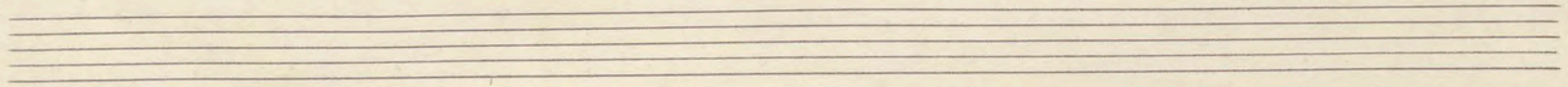
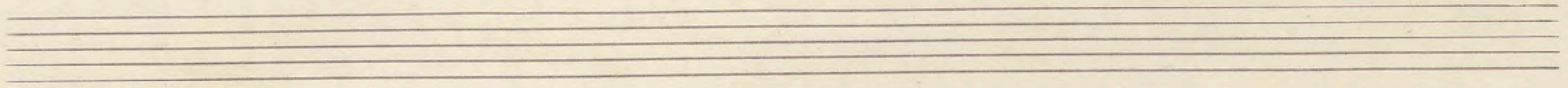
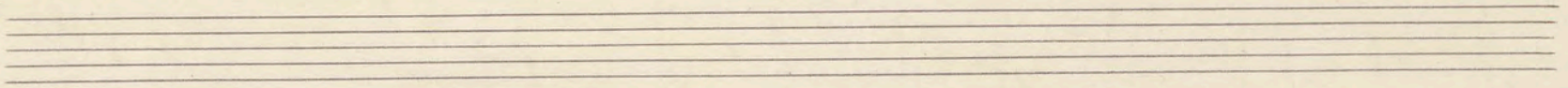
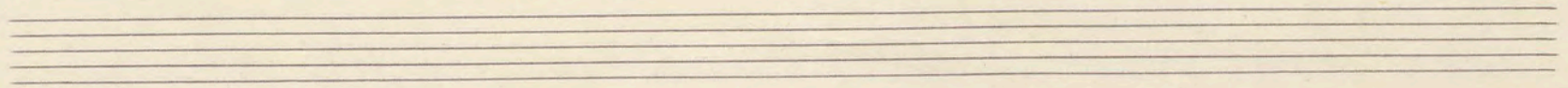
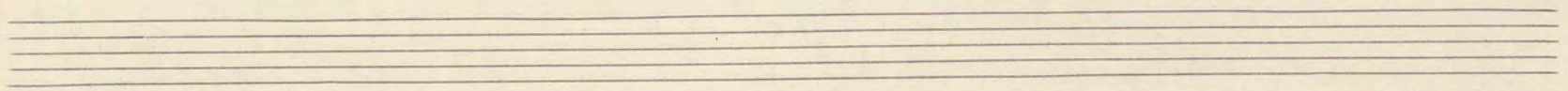
Handwritten musical notation on a grand staff. The right hand continues the melodic line. The left hand has a bass line. Handwritten notes '7 A 4' and a sharp sign are visible.

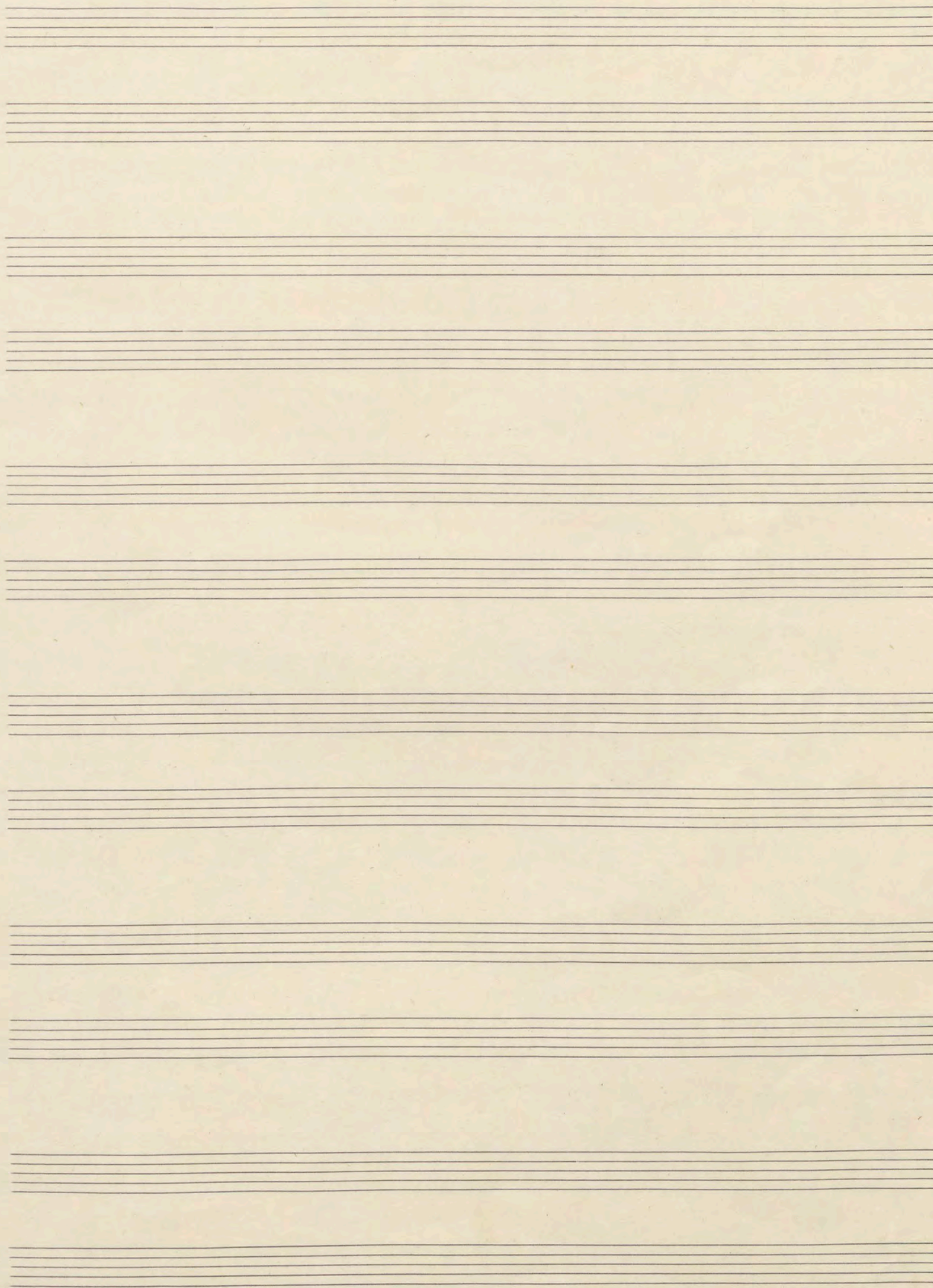
Handwritten musical notation on a grand staff. The right hand features a melodic line. The left hand has a bass line. Handwritten notes '7 A 4' and 'mi b' are present.

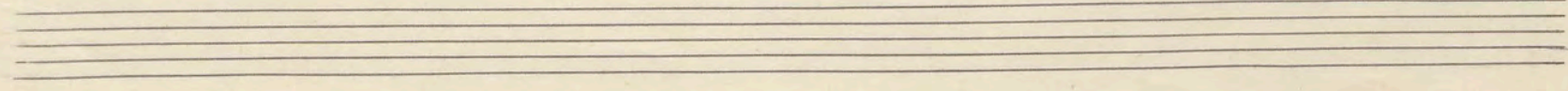
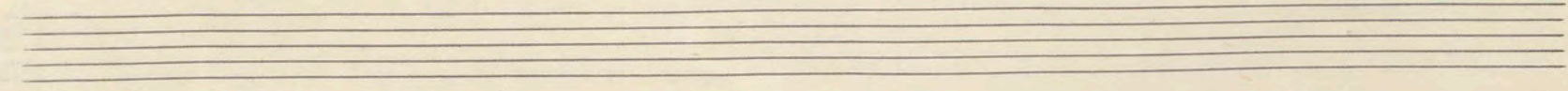
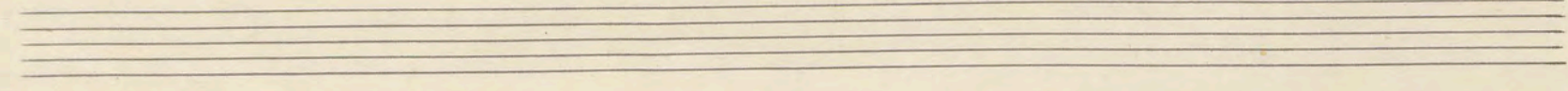
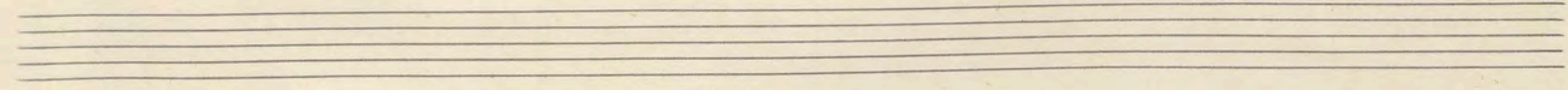
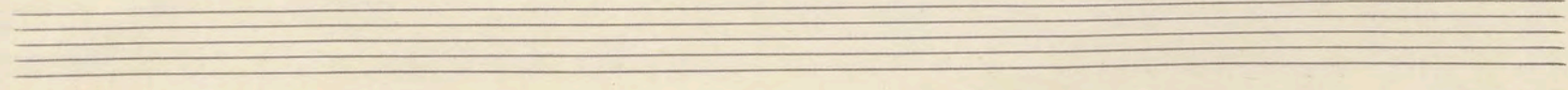
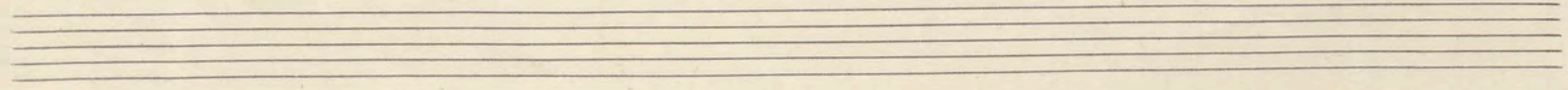
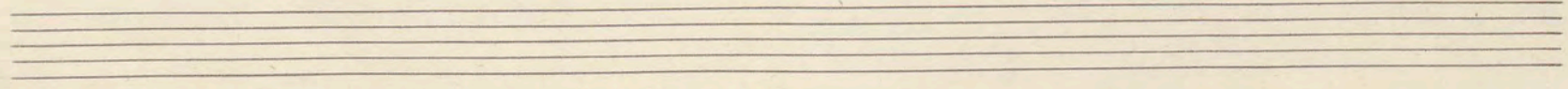
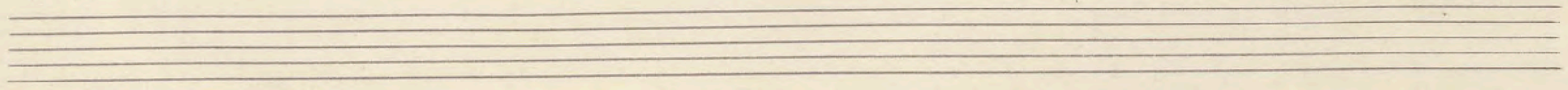
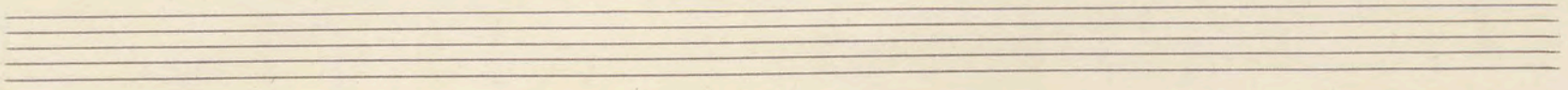
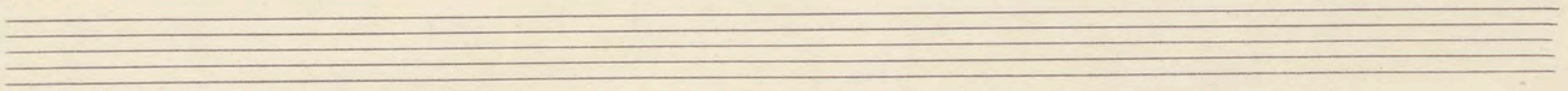
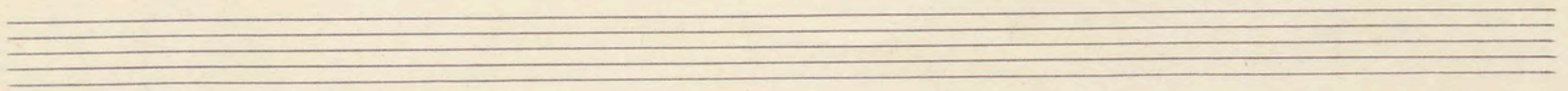
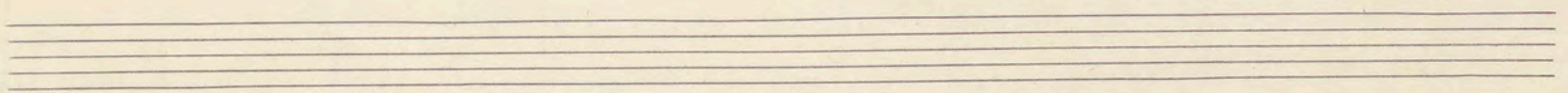
Handwritten musical notation on a grand staff. The right hand has a melodic line with a '1° 2°' marking. The left hand has a bass line. Handwritten notes '3°', 're b', and 're f' are visible.

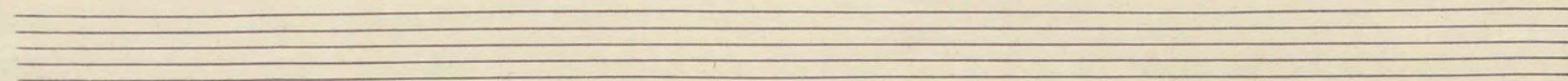
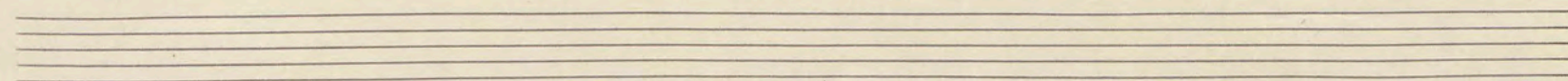
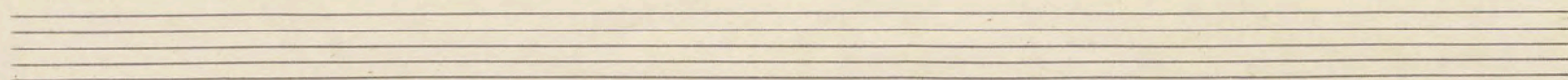
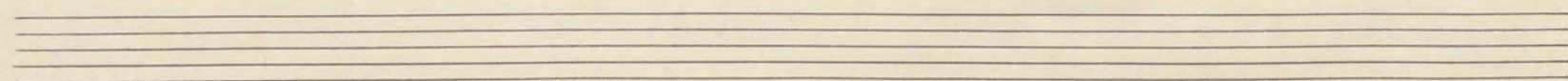
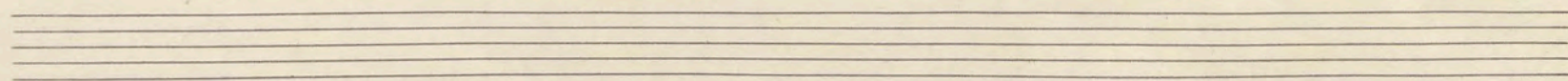
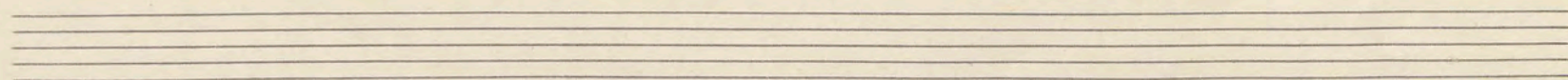
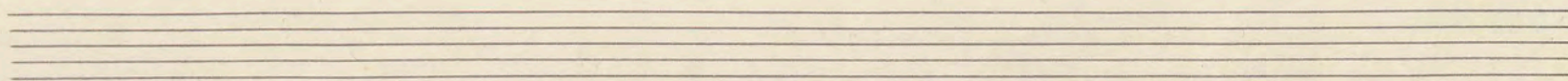
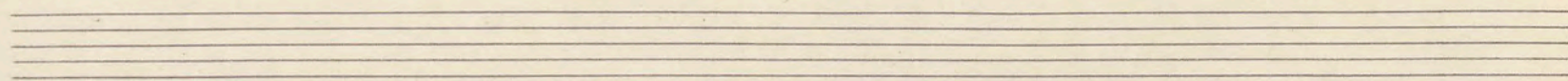
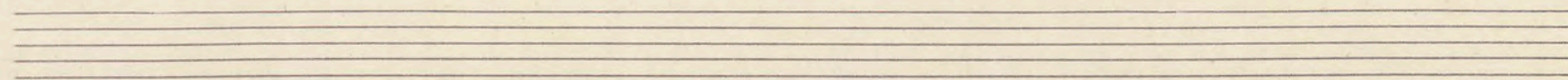
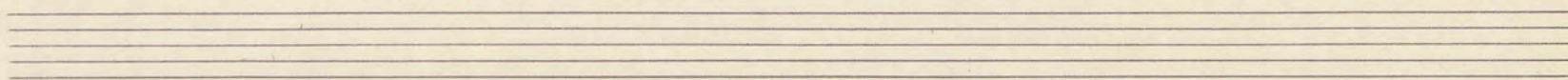
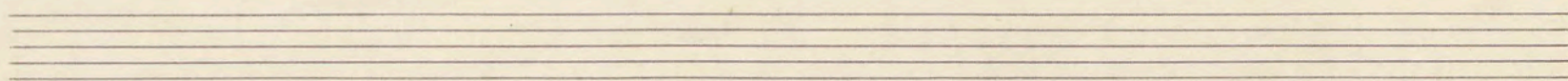
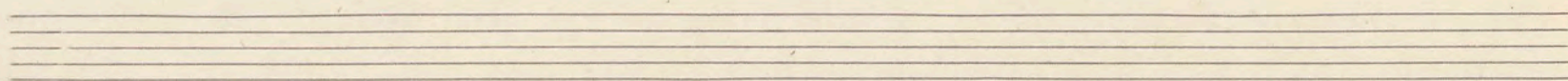
Handwritten musical notation on a grand staff. The right hand features a melodic line with a 'glissando' marking. The left hand has a bass line. Handwritten notes 'f' and '24.28.30 juillet Exposition 1935 Bruxelles' are present.

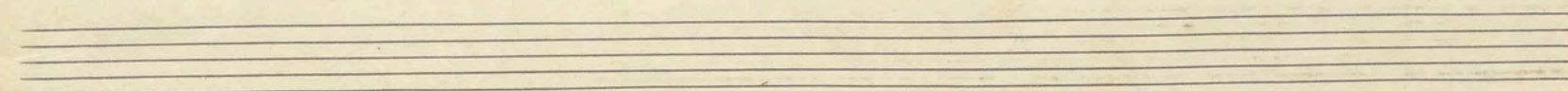
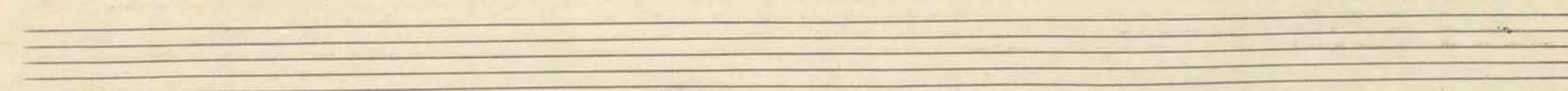
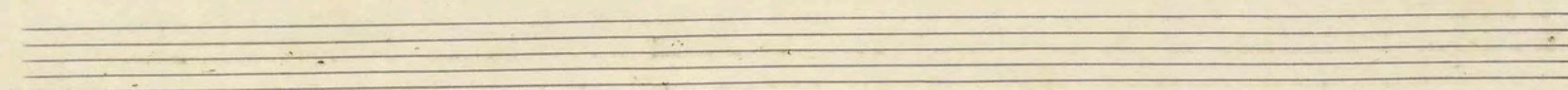
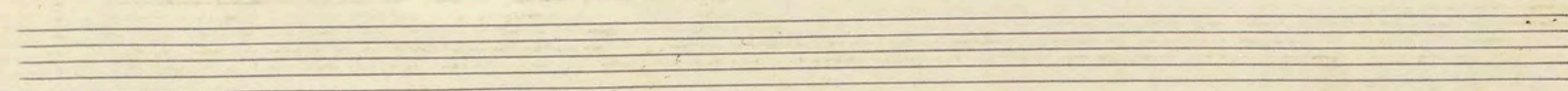
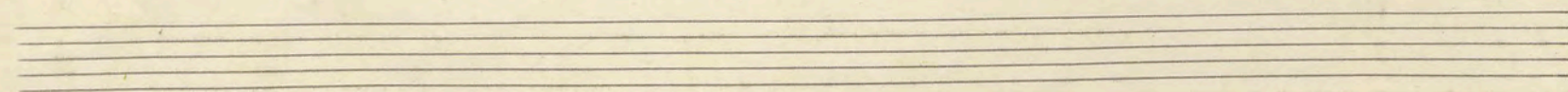
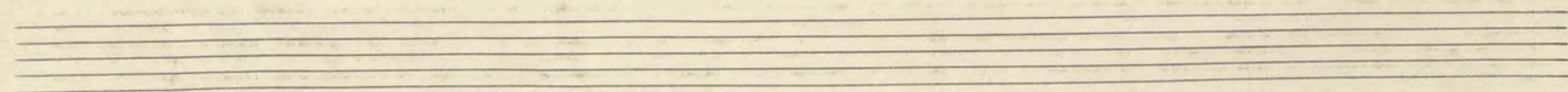
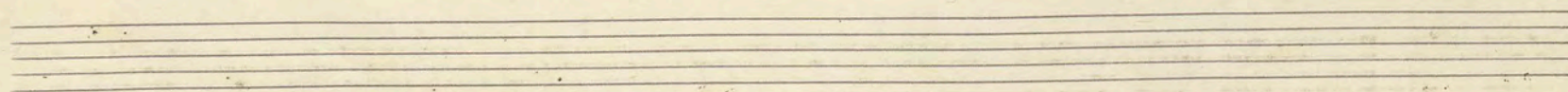
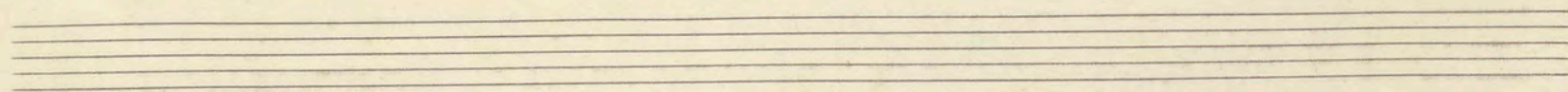
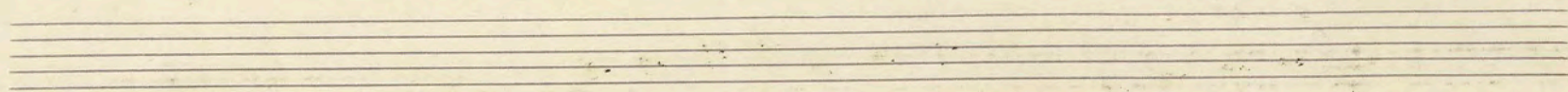
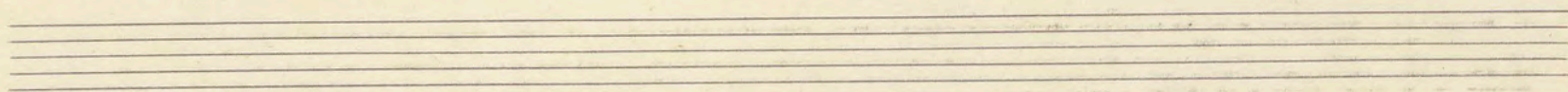
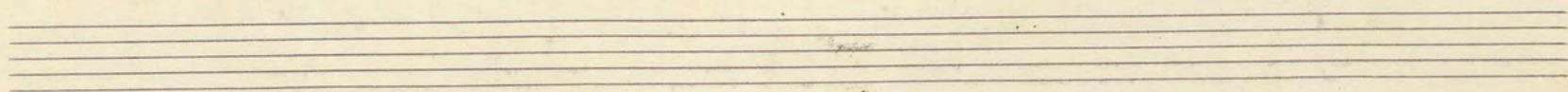
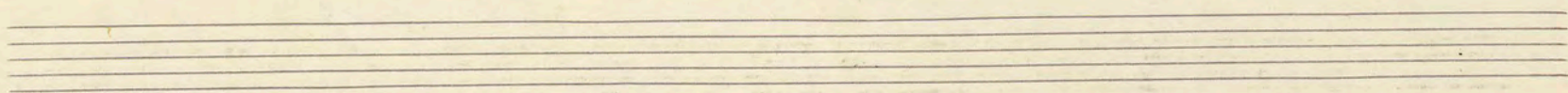
24.28.30 juillet
Exposition 1935
Bruxelles
Jean F. Roche











Extrait

Harpe

Après le

Handwritten musical notation for the first system, featuring a treble and bass staff with various notes and rests. Large handwritten numbers 5, 3, 6, and 1 are written above the staff, and a large 'p' is written below the staff. The notation is heavily crossed out with large diagonal strokes.

Anfang

Handwritten musical notation for the second system, featuring a treble and bass staff with various notes and rests. The notation is heavily crossed out with large diagonal strokes.

Handwritten musical notation for the third system, featuring a treble and bass staff with various notes and rests. The notation is heavily crossed out with large diagonal strokes. Above the staff, there are handwritten numbers 10 and 20, and a large '4' is written at the end of the system.

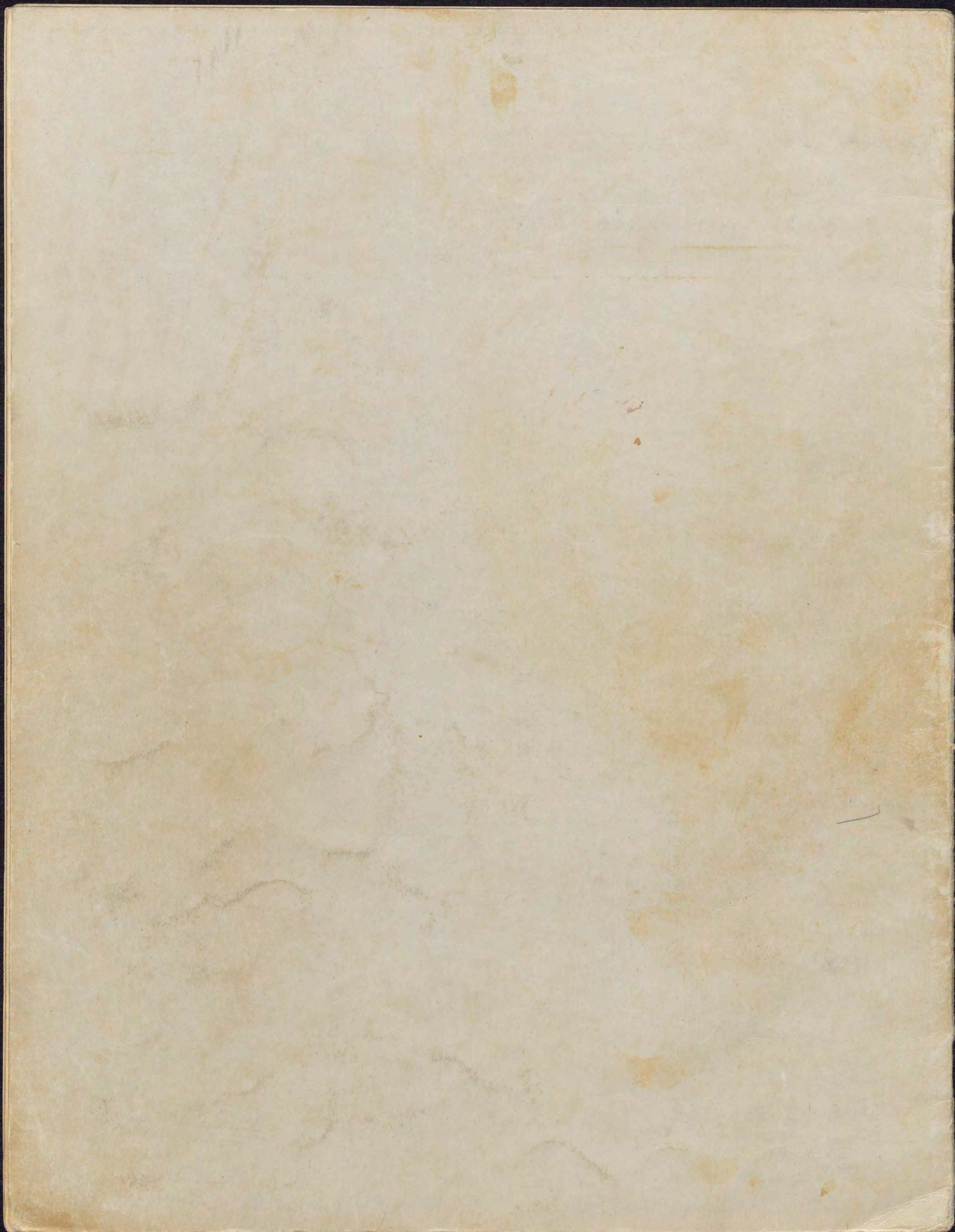
Handwritten musical notation for the fourth system, featuring a treble and bass staff with various notes and rests. The notation is heavily crossed out with large diagonal strokes. Above the staff, there are handwritten numbers 10 and 20, and a large '4' is written at the end of the system.

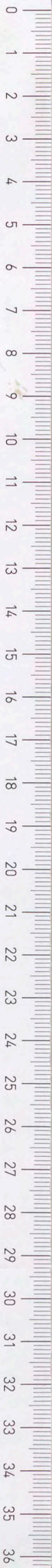
Handwritten musical notation for the fifth system, featuring a treble and bass staff with various notes and rests. The notation is heavily crossed out with large diagonal strokes. Above the staff, there are handwritten numbers 10 and 20, and a large '4' is written at the end of the system.

Scène I. ~~subito~~

Handwritten musical notation for the sixth system, featuring a treble and bass staff with various notes and rests. The notation is heavily crossed out with large diagonal strokes. Above the staff, there are handwritten numbers 3 and 15, and a large '4' is written at the end of the system.

J. Schmitz 1925





F&D 458-3-10

9

Gustave Doret

