

Zum Kl.

FPJ 6a

36652

hauy  
Hauy  
Hauy

# Pangythen

Sieben Stücke für Klavier zu vier Händen

komponiert von

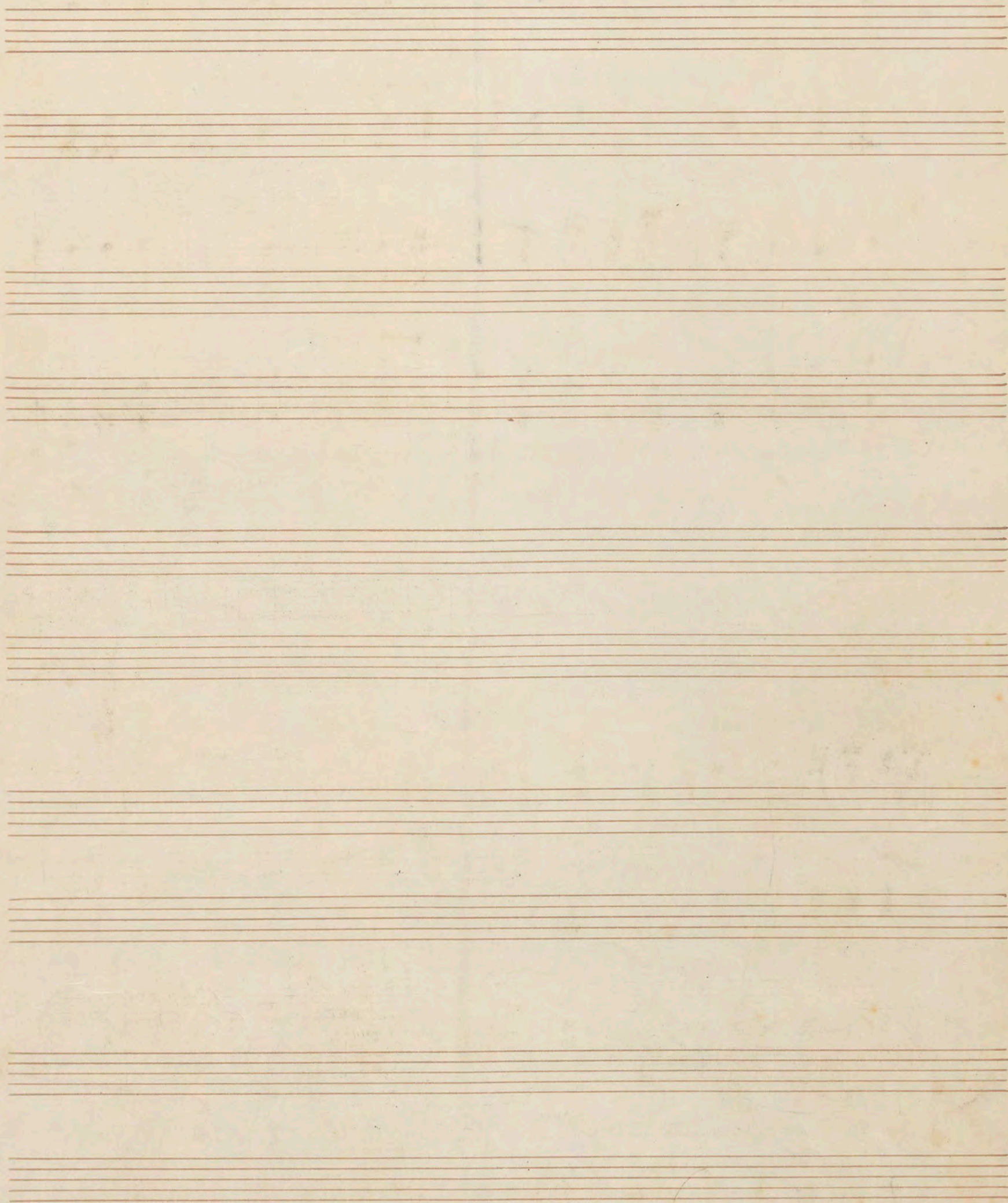
Paulson

Op. 14

I Heft	Nº	1	pag 2-3	} M. 3.
		2	" 4-9	
		3	" 10-17	
		4	" 18-19	

II Heft	Nº	5	pag 2-7	} M. 3.
		6	" 8-15	
		7	" 16-21	







No. 1

M.M.  $\text{♩} = 88$

Tanz rhythm.  
I.

alla marcica

Paul Tuvon, op. 14 II

*pian* *f* *ben marcato*

*poco rit.* *mf* *a tempo*

Copyright 1900 by S. L.

S. 9143 II.



Handwritten musical score for two systems. Each system consists of a piano part (left) and a violin part (right). The piano part is written in treble and bass staves, while the violin part is in a single staff. The key signature is two sharps (F# and C#). The first system includes dynamic markings *f* and *mf*, and a crescendo hairpin. The second system also includes *f* and *mf* markings and a crescendo hairpin. The notation includes various chords, single notes, and slurs.

Two empty musical staves, one for piano and one for violin, with red five-line staves and no notation.

Handwritten musical score for two systems. Each system consists of a piano part (left) and a violin part (right). The piano part is written in treble and bass staves, while the violin part is in a single staff. The key signature is two sharps (F# and C#). The first system includes dynamic markings *ff* and *f*, and a crescendo hairpin. The second system also includes *ff* and *f* markings and a crescendo hairpin. The notation includes various chords, single notes, and slurs.



Handwritten musical score for two systems of piano and violin. The key signature is three sharps (F#, C#, G#). The first system consists of a violin staff (treble clef) and a piano staff (treble clef). The second system consists of a violin staff (treble clef) and a piano staff (bass clef). The tempo markings are *cresc. e ritard.*, *sf*, *fff*, and *Al tempo*. The piano part features complex chords and arpeggios, while the violin part has melodic lines with some double stops.

Handwritten musical score for two systems of piano and violin. The key signature is three sharps (F#, C#, G#). The first system consists of a violin staff (treble clef) and a piano staff (treble clef). The second system consists of a violin staff (treble clef) and a piano staff (bass clef). The tempo markings are *cresc.*. The piano part features complex chords and arpeggios, while the violin part has melodic lines with some double stops.



4)

poco a poco ritard.

ff

fff

2/4

~~No. 2. Allegretto. M. M. ♩ = 138~~ II.

poco a poco ritard.

2/4



Handwritten musical score for piano, measures 1-6. The score is written on two systems of staves. The first system consists of a grand staff (treble and bass clefs) and a single bass staff. The key signature is three sharps (F#, C#, G#). The first system contains measures 1-3, and the second system contains measures 4-6. The notation includes various musical symbols such as notes, rests, and dynamic markings. A 'p' (piano) marking is present in measure 2. There are also some 'x' marks in the bass staff of measures 4 and 5.

Handwritten musical score for piano, measures 7-12. The score is written on two systems of staves. The first system consists of a grand staff (treble and bass clefs) and a single bass staff. The key signature is three sharps (F#, C#, G#). The first system contains measures 7-9, and the second system contains measures 10-12. The notation includes various musical symbols such as notes, rests, and dynamic markings. A 'mf' (mezzo-forte) marking is present in measure 7. There are also some 'x' marks in the bass staff of measures 10 and 11.



Handwritten musical score, first system. The score is written for two staves (treble and bass clef) and includes a key signature of three sharps (F#, C#, G#). The notation features complex rhythmic patterns, including triplets and sixteenth notes, and is marked with a '3' above the first staff.

Handwritten musical score, second system. The score is written for two staves (treble and bass clef) and includes a key signature of three sharps (F#, C#, G#). The notation features complex rhythmic patterns, including triplets and sixteenth notes, and is marked with a '4' above the first staff. The tempo instruction *f poco più mosso* is written below the first staff.



Handwritten musical score on two systems. The top system consists of two staves (treble and bass clef) with a key signature of three sharps (F#, C#, G#). The music features complex chords and melodic lines. The bottom system also consists of two staves with the same key signature. It includes dynamic markings such as *mf* and *cresc.*, and some sections are heavily crossed out with diagonal lines. A wavy line above the first system indicates a section boundary.

Handwritten musical score on two systems. The top system consists of two staves (treble and bass clef) with a key signature of three sharps (F#, C#, G#). The music features complex chords and melodic lines. The bottom system also consists of two staves with the same key signature. It includes dynamic markings such as *ff* and *f*, and some sections are heavily crossed out with diagonal lines. A wavy line above the first system indicates a section boundary. At the end of the bottom system, there is a measure with a '6' and a '4/5' time signature.



Handwritten musical score for "The Rose Tree". The score is written on two systems of staves. The top system consists of a treble staff and a grand staff (treble and bass). The bottom system consists of a treble staff and a grand staff. The key signature is three sharps (F#, C#, G#). The time signature is 8/8, indicated by a large '8' at the beginning. The music features a melody in the treble staff and a bass line in the grand staff. The melody is written in a simple, folk-like style. The bass line is written in a more complex, rhythmic style. The score includes various musical notations such as notes, rests, and bar lines. There are also some handwritten annotations and corrections. The score is written on aged, yellowed paper.

\* Die ~~unbekannte~~ ~~Noten~~ ~~und~~ ~~das~~ ~~System~~ ~~findet~~ ~~sich~~ ~~in~~ ~~den~~ ~~Noten~~ ~~vor~~  
Noten das System findet sich in den Noten vor

Handwritten musical score for "The Rose Tree" in G major. The score is written on four staves, with the top two staves grouped by a brace on the left and the bottom two staves grouped by a brace on the left. The key signature is G major (one sharp). The time signature is 8/8, indicated by a large '8' at the top left. The music is written in a simple, handwritten style. The first system (top two staves) contains the first two measures of the piece. The second system (bottom two staves) contains the next two measures. The notation includes various musical symbols such as notes, rests, and bar lines. There are some corrections and scribbles in the second system, particularly in the bass staff. The score is written on aged, slightly yellowed paper.



*a tempo primo*

Handwritten musical score for the first system, measures 1-4. It features a grand staff with treble and bass clefs, a key signature of three sharps (F#, C#, G#), and a common time signature (C). The music consists of eighth and sixteenth notes, some beamed together, with slurs and ties. The tempo marking "a tempo primo" is written in cursive above the first measure.

Two empty musical staves, each consisting of five horizontal lines.

Handwritten musical score for the second system, measures 5-8. It continues the grand staff notation from the first system, with treble and bass clefs, a key signature of three sharps, and a common time signature. The music includes various note values, slurs, and ties. A measure rest "3" is present in the second measure of the first staff.



Handwritten musical score for piano, measures 1-4. The score is written on two systems of staves. The key signature is three sharps (F#, C#, G#). The first system consists of a treble and bass staff. The second system also consists of a treble and bass staff. The notation includes various musical symbols such as notes, rests, and dynamic markings like *mf* (mezzo-forte). There are also some handwritten annotations and a small number '4' in the second system.

Handwritten musical score for piano, measures 5-8. The score is written on two systems of staves. The key signature is three sharps (F#, C#, G#). The first system consists of a treble and bass staff. The second system also consists of a treble and bass staff. The notation includes various musical symbols such as notes, rests, and dynamic markings like *mf* (mezzo-forte). There are also some handwritten annotations and a small number '5' in the second system.



8

*f più mosso*

6 6/7

*p*

*f più mosso*

6 6/7

*p*

8

*f più mosso*

6 6/7

*p*

*p*



Handwritten musical score for the first system, measures 1-4. The system consists of two staves. The upper staff is in treble clef with a key signature of three sharps (F#, C#, G#). It contains a melodic line with eighth and sixteenth notes, some beamed together, and a final measure with a fermata. The lower staff is in bass clef with the same key signature. It contains a bass line with eighth and sixteenth notes, some beamed together, and a final measure with a fermata. The dynamic marking 'ff' (fortissimo) is present in both staves. There are some handwritten annotations, including a 'v' (accrescendo) and a '2' (second ending) in the right margin.

Two empty musical staves, one in treble clef and one in bass clef, with a key signature of three sharps (F#, C#, G#).

Handwritten musical score for the second system, measures 5-8. The system consists of two staves. The upper staff is in treble clef with a key signature of three sharps (F#, C#, G#). It contains a melodic line with eighth and sixteenth notes, some beamed together, and a final measure with a fermata. The lower staff is in bass clef with the same key signature. It contains a bass line with eighth and sixteenth notes, some beamed together, and a final measure with a fermata. The dynamic marking 'ff' (fortissimo) is present in both staves. There are some handwritten annotations, including a 'v' (accrescendo) and a '3' (third ending) in the right margin.



8

4x

x) In diesem Thale die unsern  
Hoben das weisse Joch Rhein Hoben

*a tempo primo*

5

*a tempo primo*

5



Handwritten musical score for piano and violin/viola. The score is in G major (one sharp) and 8/9 time. It consists of two systems. The first system has a violin/viola part with a melodic line and a piano accompaniment with chords and moving lines. The second system continues the same parts. Dynamics include 'rit.' (ritardando) and 'pp' (pianissimo). The piece ends with a double bar line and a repeat sign.

Tempo di Valse. III.  
~~Allegro~~ M.M. = 54.

Handwritten musical score for piano and violin/viola. The score is in G major (one sharp) and 3/4 time. It consists of two systems. The first system has a violin/viola part with a melodic line and a piano accompaniment with chords and moving lines. The second system continues the same parts. Dynamics include 'f' (forte). The piece ends with a double bar line and a repeat sign.



Handwritten musical score on two staves. The top staff is in treble clef with a key signature of one sharp (F#). It contains several measures of music, including a section marked "rit." (ritardando) and another marked "a tempo". There are extensive red markings, including wavy lines at the top and various red ink corrections and annotations throughout the staff. The bottom staff is in bass clef with a key signature of one sharp (F#). It also contains several measures of music, including a section marked "rit." and another marked "a tempo". There are also red markings and annotations on this staff.

Handwritten musical score on two staves. The top staff is in treble clef with a key signature of one sharp (F#). It contains several measures of music, including a section marked "2" and another marked "6". There are blue markings, including a wavy line at the top and various blue ink corrections and annotations throughout the staff. The bottom staff is in bass clef with a key signature of one sharp (F#). It also contains several measures of music, including a section marked "6" and another marked "14/15". There are also blue markings and annotations on this staff.



*Poco meno mosso*

Handwritten musical score for the first system, measures 1-4. The music is written on two staves (treble and bass clefs) with a key signature of one sharp (F#). The tempo marking "Poco meno mosso" is written above the staff. The notation includes various notes, rests, and dynamic markings. A bracket with the number "8" is placed above the first measure. The first two measures are marked with a "2" below the staff. The third measure is marked with a "2" below the staff. The fourth measure is marked with a "2" below the staff.

Handwritten musical score for the second system, measures 5-8. The music continues on two staves (treble and bass clefs) with a key signature of one sharp (F#). The notation includes various notes, rests, and dynamic markings. The first measure is marked with a "2" below the staff. The second measure is marked with a "2" below the staff. The third measure is marked with a "2" below the staff. The fourth measure is marked with a "2" below the staff.



Handwritten musical score for the first system, measures 1-5. The score is written for two staves (treble and bass clef) and includes tempo markings: *poco rit.* and *a tempo*. The key signature is one sharp (F#). The notation includes various musical symbols such as notes, rests, and dynamic markings.

Handwritten musical score for the second system, measures 6-10. The score continues the musical piece, maintaining the same key signature and tempo markings. The notation includes various musical symbols such as notes, rests, and dynamic markings.



The first system of the handwritten musical score consists of four staves. The top two staves are in treble clef, and the bottom two are in bass clef. The key signature is one sharp (F#). The notation includes various note values, rests, and dynamic markings. The first staff has a series of notes with slurs, followed by a rest. The second staff has a series of notes with slurs, followed by a rest. The third staff has a series of notes with slurs, followed by a rest. The fourth staff has a series of notes with slurs, followed by a rest. The system ends with a double bar line.

Tempo primo

The second system of the handwritten musical score consists of four staves. The top two staves are in treble clef, and the bottom two are in bass clef. The key signature is one sharp (F#). The notation includes various note values, rests, and dynamic markings. The first staff has a series of notes with slurs, followed by a rest. The second staff has a series of notes with slurs, followed by a rest. The third staff has a series of notes with slurs, followed by a rest. The fourth staff has a series of notes with slurs, followed by a rest. The system ends with a double bar line.



Handwritten musical score on two systems. The first system features a treble and bass staff with complex notation, including many beamed notes and accidentals. A red wavy line is drawn above the first staff. The second system continues the notation. Handwritten annotations include "poco rit." and "a tempo" in both systems.

Handwritten musical score on two systems. The first system features a treble and bass staff with complex notation, including many beamed notes and accidentals. A red wavy line is drawn above the first staff. The second system continues the notation. Handwritten annotations include "poco rit." and "a tempo" in both systems.



Handwritten musical score for the first system. The score is written on four staves. The first two staves are grouped by a brace on the left. The first staff has a treble clef and a key signature of one sharp (F#). The second staff has a bass clef and a key signature of one sharp (F#). The third and fourth staves are also grouped by a brace on the left. The third staff has a treble clef and a key signature of one sharp (F#). The fourth staff has a bass clef and a key signature of one sharp (F#). The music begins with a wavy line above the first staff, indicating a piano introduction. The notation includes various notes, rests, and dynamic markings such as *p* (piano) and *ff* (fortissimo). There are also some red markings on the notes.

Handwritten musical score for the second system. The score is written on four staves. The first two staves are grouped by a brace on the left. The first staff has a treble clef and a key signature of one sharp (F#). The second staff has a bass clef and a key signature of one sharp (F#). The third and fourth staves are also grouped by a brace on the left. The third staff has a treble clef and a key signature of one sharp (F#). The fourth staff has a bass clef and a key signature of one sharp (F#). The music includes tempo markings such as *poco rit.* (poco ritardando) and *cantabile a tempo* (cantabile at tempo). The notation includes various notes, rests, and dynamic markings such as *p* (piano) and *ff* (fortissimo).







Handwritten musical score for "The Rose Tree" in G major, 3/4 time. The score is written on four staves, grouped into two systems of two staves each. The first system (top two staves) features a treble clef and a key signature of one sharp (F#). The second system (bottom two staves) features a bass clef and a key signature of one sharp (F#). The music is written in a simple, folk-like style with many whole and half notes. The first system includes a crescendo marking and a dynamic marking of *mf* (mezzo-forte). The second system also includes a crescendo marking and a dynamic marking of *mf*. The score is written on aged, slightly yellowed paper.

A handwritten musical score for the song 'The Rose Tree'. The score is written on four staves, grouped into two systems of two staves each. The first system (top two staves) is in treble clef with a key signature of one sharp (F#). The second system (bottom two staves) is in bass clef with the same key signature. The music is written in a simple, handwritten style. The first staff of the first system contains a melody with a half note, a quarter note, and a half note. The second staff of the first system contains a melody with a half note, a quarter note, and a half note. The first staff of the second system contains a melody with a half note, a quarter note, and a half note. The second staff of the second system contains a melody with a half note, a quarter note, and a half note. The score is written on aged, slightly yellowed paper. There are some ink smudges and corrections visible in the notation. The overall style is that of a personal or working manuscript.



Handwritten musical notation for the first system, featuring a treble and bass staff. The treble staff contains a melodic line with various accidentals and a fermata. The bass staff is mostly empty. The tempo marking *f acceller.* is written in red ink. A *rit.* marking is present at the end of the system.

Handwritten musical notation for the second system, featuring a treble and bass staff. The treble staff contains a melodic line with various accidentals and a fermata. The bass staff contains a rhythmic pattern of eighth notes. The tempo marking *f acceller.* is written in red ink. A *rit.* marking is present at the end of the system.

Handwritten musical notation for the third system, featuring a treble and bass staff. The treble staff contains a melodic line with various accidentals and a fermata. The bass staff contains a rhythmic pattern of eighth notes. The tempo marking *Pa tempo* is written in black ink.

Handwritten musical notation for the fourth system, featuring a treble and bass staff. The treble staff contains a melodic line with various accidentals and a fermata. The bass staff contains a rhythmic pattern of eighth notes. The tempo marking *Pa tempo* is written in black ink. Red ink markings are visible at the bottom of the system.



8

*poco rit.* *a tempo*

*rit.* *a tempo*



No 3  
non Oportet

bis ~~Φ~~, ubi ofus  
Minderfolung gaisan  
dum nri fur  
wir folgt :  
einb/tenen

~~Φ~~  
f poco accel.  
f poco acceller.  
~~Φ~~

~~Φ~~  
grave  
poco rit.  
ff grave  
poco rit.  
16/17  
16/17



22/ ~~No. 4~~ Allegretto ~~grazioso~~ <sup>IV</sup> ~~Moderato~~  
M. M. ♩ = 160

Handwritten musical notation for the first system, featuring two staves with treble and bass clefs, 5/4 time signature, and various notes and rests.

Handwritten musical notation for the second system, featuring two staves with treble and bass clefs, 5/4 time signature, and various notes and rests. Includes the instruction "una corda" written below the bass staff.

Handwritten musical notation for the third system, featuring two staves with treble and bass clefs, 5/4 time signature, and various notes and rests. Includes the instruction "cresc." written above the bass staff.

Handwritten musical notation for the fourth system, featuring two staves with treble and bass clefs, 5/4 time signature, and various notes and rests. Includes the instruction "cresc." written above the bass staff.



Handwritten musical notation, first system. It consists of two staves joined by a brace on the left. The key signature has five flats (B-flat, E-flat, A-flat, D-flat, G-flat). The first staff contains several chords and single notes, some with accents. The second staff contains chords and single notes, with a *pp* dynamic marking in the third measure.

Handwritten musical notation, second system. It consists of two staves joined by a brace on the left. The first staff contains a melodic line with eighth and sixteenth notes, with a *mf* dynamic marking. The second staff contains a bass line with eighth and sixteenth notes, with a *pp* dynamic marking.

Two empty musical staves.

Handwritten musical notation, third system. It consists of two staves joined by a brace on the left. The first staff contains chords and single notes. The second staff contains a melodic line with eighth and sixteenth notes, with a *z* (accidental) marking.

Handwritten musical notation, fourth system. It consists of two staves joined by a brace on the left. The first staff contains a melodic line with eighth and sixteenth notes. The second staff contains a bass line with eighth and sixteenth notes.



Handwritten musical score on two systems. The first system consists of two staves, each with a treble and bass clef. The key signature is three flats (B-flat, E-flat, A-flat). The first staff begins with a treble clef and a key signature of three flats. The second staff begins with a bass clef and a key signature of three flats. The notation includes various notes, rests, and accidentals. The second system also consists of two staves, each with a treble and bass clef. The key signature is three flats. The notation includes various notes, rests, and accidentals. The second system ends with a double bar line.

Two empty musical staves, each consisting of a treble and bass clef.

Handwritten musical score on two systems. The first system consists of two staves, each with a treble and bass clef. The key signature is three flats (B-flat, E-flat, A-flat). The first staff begins with a treble clef and a key signature of three flats. The second staff begins with a bass clef and a key signature of three flats. The notation includes various notes, rests, and accidentals. The second system also consists of two staves, each with a treble and bass clef. The key signature is three flats. The notation includes various notes, rests, and accidentals. The second system ends with a double bar line.



Handwritten musical notation for the first system. The treble staff contains a melodic line with notes and rests, marked with *crescendo e rit.* and *f*. The bass staff contains a lower melodic line, also marked with *crescendo e rit.* and *f*. A red vertical mark is present on the first measure of the bass staff.

Handwritten musical notation for the second system. The treble staff contains a melodic line with notes and rests, marked with *crescendo e rit.* and *f*. The bass staff contains a lower melodic line, also marked with *crescendo e rit.* and *f*. A red vertical mark is present on the first measure of the bass staff.

Two empty musical staves, each consisting of five lines.

Handwritten musical notation for the third system. The treble staff contains a melodic line with notes and rests, marked with *p* and *f*. The bass staff contains a lower melodic line, also marked with *p* and *f*. A red vertical mark is present on the first measure of the bass staff.

Handwritten musical notation for the fourth system. The treble staff contains a melodic line with notes and rests, marked with *p* and *f*. The bass staff contains a lower melodic line, also marked with *p* and *f*. A red vertical mark is present on the first measure of the bass staff.



Handwritten musical notation for the first system, featuring treble and bass staves with complex chords and melodic lines. The notation includes a *cresc.* marking and a measure number '8'.

Handwritten musical notation for the second system, featuring treble and bass staves with complex chords and melodic lines. The notation includes a *cresc.* marking.

Empty musical staves for the third system.

Handwritten musical notation for the fourth system, featuring treble and bass staves with complex chords and melodic lines. The notation includes a *dim.* marking.

Handwritten musical notation for the fifth system, featuring treble and bass staves with complex chords and melodic lines. The notation includes a *dim.* marking and a measure number '6'.



Handwritten musical notation on two staves. The top staff is in treble clef and the bottom staff is in bass clef. Both staves have a key signature of three flats (B-flat, E-flat, A-flat). The music features a melodic line in the upper voice and a more rhythmic, arpeggiated line in the lower voice. A red line is drawn under a phrase in the upper voice. The dynamic marking *pp* is written above the second measure of the lower staff.

Handwritten musical notation on two staves, continuing the piece. The notation is similar to the first system, with a melodic line in the upper voice and a rhythmic line in the lower voice. A red line is drawn under a phrase in the lower voice. The dynamic marking *pp* is written above the second measure of the lower staff.

Two empty musical staves, likely for a second system or a different part of the composition.

Handwritten musical notation on two staves. The top staff is in treble clef and the bottom staff is in bass clef. Both staves have a key signature of three flats. The music features a melodic line in the upper voice and a rhythmic line in the lower voice. A red line is drawn under a phrase in the upper voice. The dynamic marking *poco rit.* is written above the second measure of the lower staff. The piece concludes with a double bar line and a fermata. The number 7 is written above the final measure of the lower staff, and the fraction  $\frac{18}{19}$  is written to the right of the double bar line.

Handwritten musical notation on two staves, continuing the piece. The notation is similar to the first system, with a melodic line in the upper voice and a rhythmic line in the lower voice. A red line is drawn under a phrase in the lower voice. The dynamic marking *poco rit.* is written above the second measure of the lower staff. The piece concludes with a double bar line and a fermata. The number 7 is written above the final measure of the lower staff, and the fraction  $\frac{18}{19}$  is written to the right of the double bar line. The text *Step. I.* is written below the final measure of the lower staff.



No. 5. Allegro molto M. M. ♩ = 184

Tanzrhythmus

V

Paul Tuon, op. 14 II

First system of handwritten musical notation. It consists of two staves, each with a treble and bass clef, a key signature of two flats (B-flat and E-flat), and a 3/4 time signature. The tempo is marked 'Allegro molto' and the metronome is set at 184. The dynamics are marked 'ff' (fortissimo) and 'con fuoco'. The notation includes various chords and melodic lines.

M. M. ♩ = 160

Meno allegro, ~~ma grazioso~~

Second system of handwritten musical notation. It consists of two staves, each with a treble and bass clef, a key signature of two flats (B-flat and E-flat), and a 3/4 time signature. The tempo is marked 'Meno allegro' and the metronome is set at 160. The dynamics are marked 'p' (piano) and 'con delicatezza'. The notation includes various chords and melodic lines.

Copyright 1900 by Sal

Op. 9143 II



Handwritten musical score on two systems. The first system features a treble and bass staff with complex notation, including a large crescendo hairpin and the instruction *accelerando* in red ink. A circled  $\frac{4}{5}$  is visible below the staff. The second system continues the notation with another *accelerando* instruction in red ink. The page is numbered 3 in the top right corner.

Handwritten musical score on two systems. The first system includes a treble and bass staff with notation and the instruction *a tempo* in red ink. A large bracket with the number 8 spans across the system. The second system continues the notation with another *a tempo* instruction in red ink. The page is numbered 2 in the top right corner.



Handwritten musical score on two systems. The first system has two staves with a treble and bass clef, both in B-flat major. The second system also has two staves with a treble and bass clef, both in B-flat major. The music is written in a historical style with many accidentals and ornaments. There are blue annotations: "1 I" above the first staff of the first system, and "2" below the first staff of the second system. A large bracket spans the first system, and a smaller bracket spans the second system. The page number "4" is in the top left corner.

Handwritten musical score on two systems. The first system has two staves with a treble and bass clef, both in B-flat major. The second system also has two staves with a treble and bass clef, both in B-flat major. The music is written in a historical style with many accidentals and ornaments. There are blue annotations: "2" above the first staff of the first system, and "2" below the first staff of the second system. A large bracket spans the first system, and a smaller bracket spans the second system. The page number "4" is in the top left corner.



Handwritten musical score, first system. The notation is in treble and bass staves, featuring complex chords and melodic lines. The instruction *molto cresc.* is written above the staff.

Handwritten musical score, second system. The notation continues in treble and bass staves. The instruction *molto cresc.* is written above the staff.

Handwritten musical score, third system. The notation continues in treble and bass staves. The instruction *con fuoco* is written below the staff. The system concludes with a red bracket and a red circle.



*delicatamente*

*cantabile*

45

*accell.*

*a tempo*

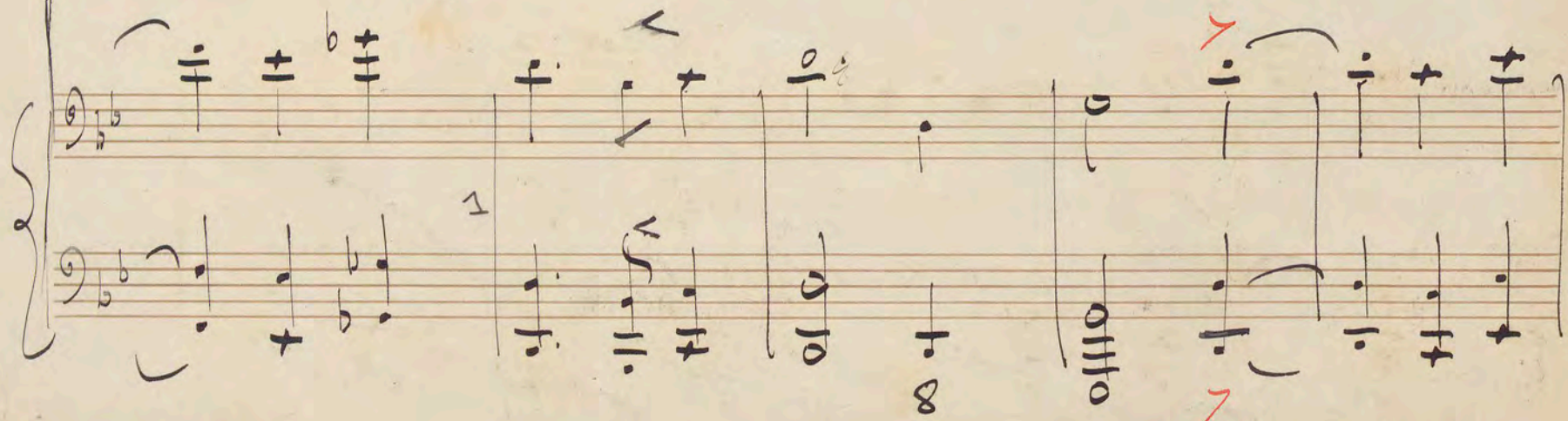
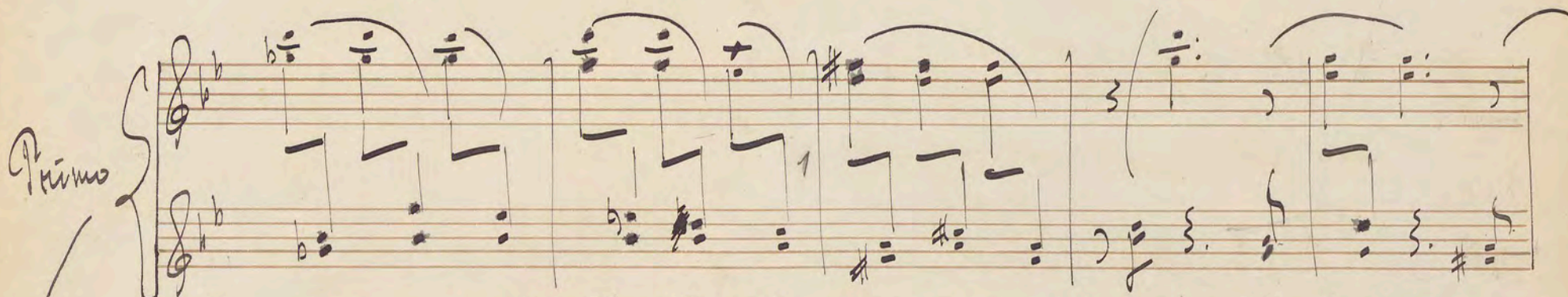
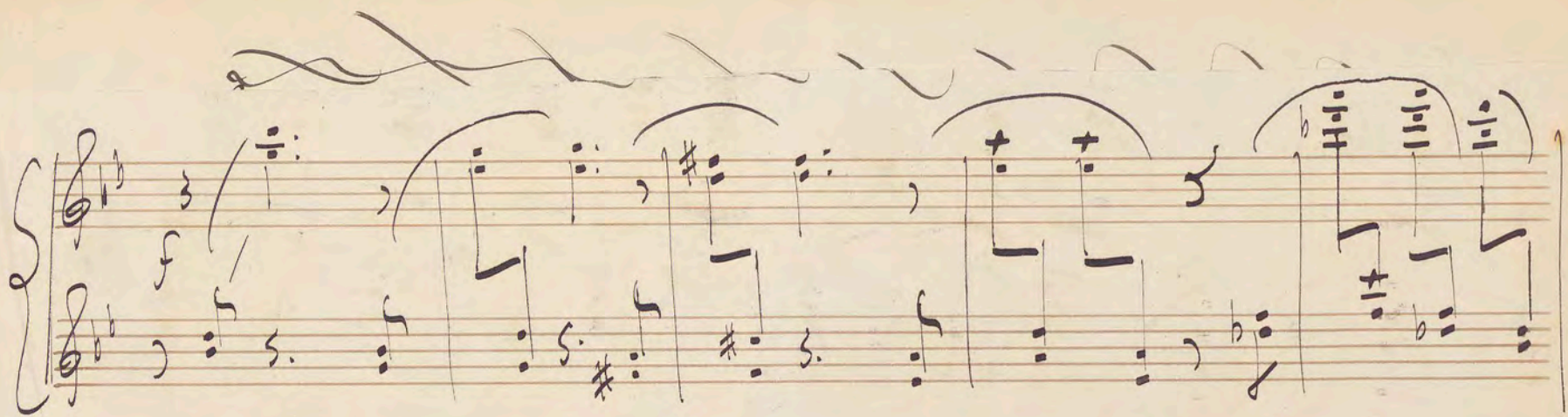
6



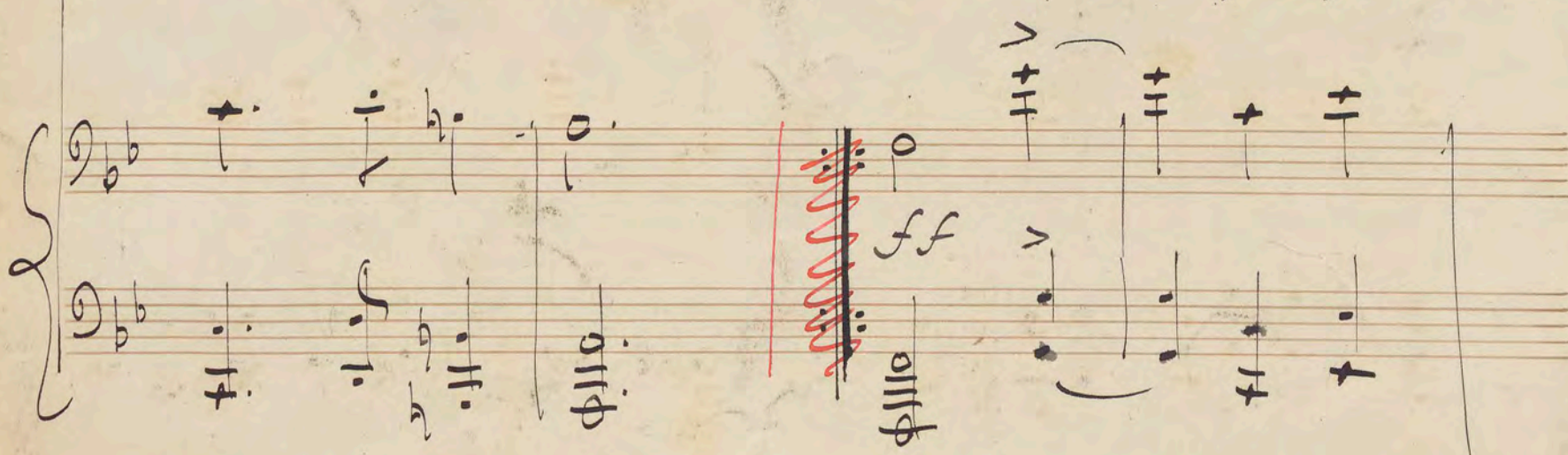
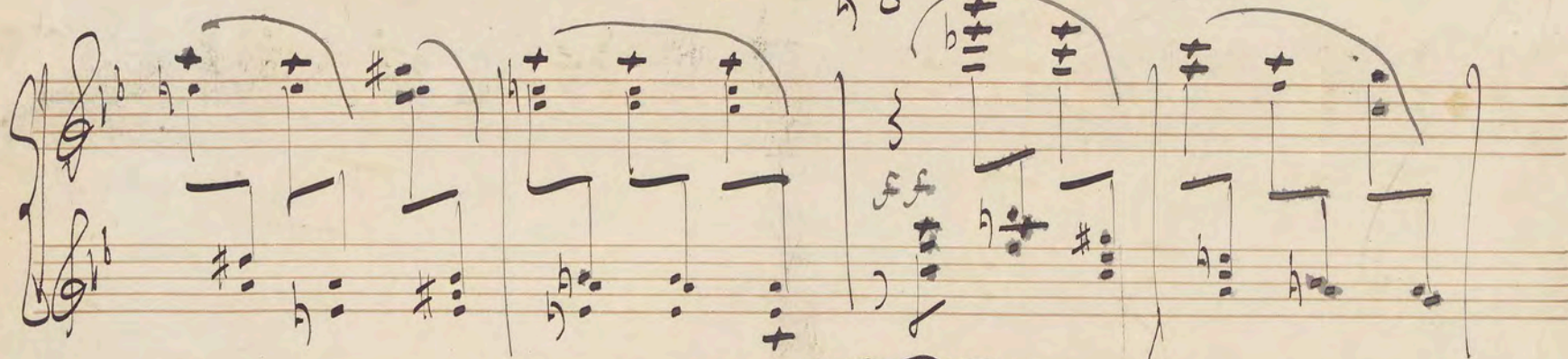
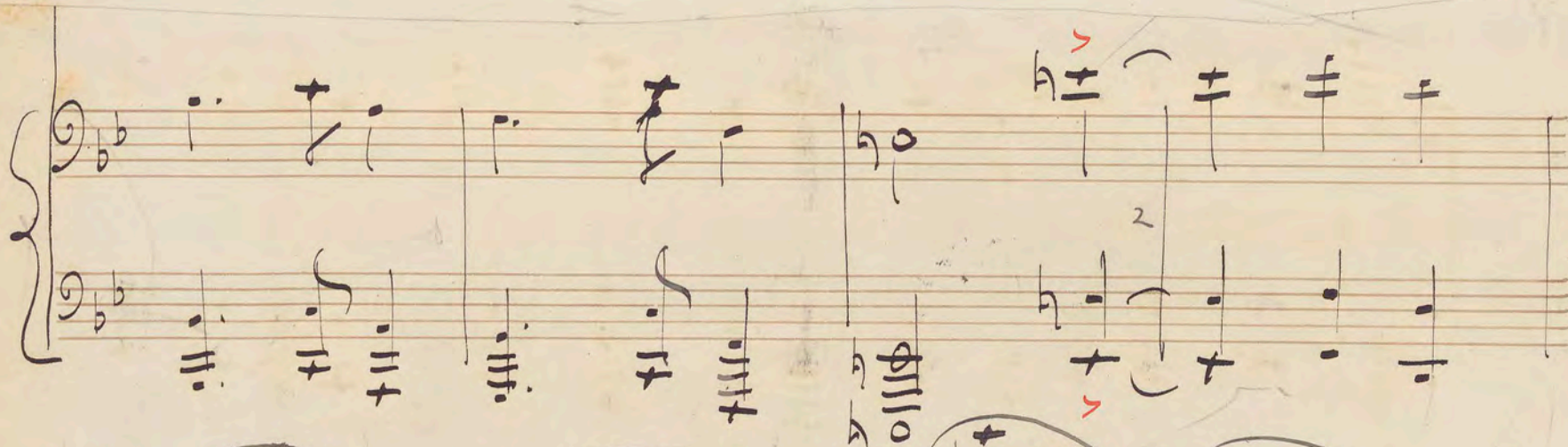
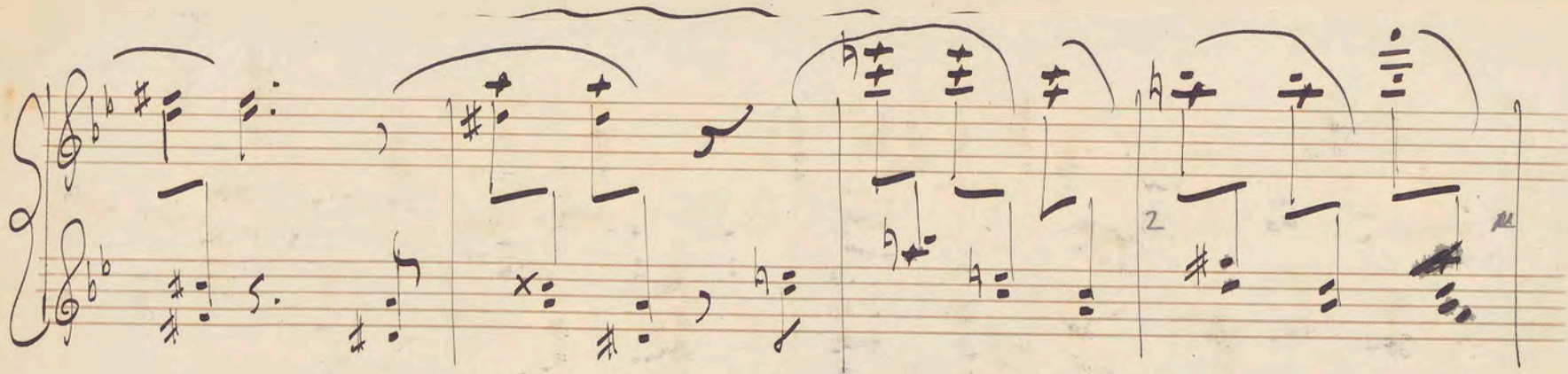
The first system of the handwritten musical score consists of four staves. The top two staves are for piano (p) and violin (v), and the bottom two are for piano (p) and violin (v). The notation is complex, with many beamed notes and accidentals. There are blue annotations: a '50' in the first measure of the piano staff and a '5' in the first measure of the violin staff. The system ends with a double bar line.

The second system of the handwritten musical score consists of four staves. The top two staves are for piano (p) and violin (v), and the bottom two are for piano (p) and violin (v). The notation is complex, with many beamed notes and accidentals. There are red annotations: 'piu allegro' written in red ink in the middle of the system, and a large red 'B' at the end of the system. There are also blue annotations: a '7' in the first measure of the piano staff, a '6' in the first measure of the violin staff, and a '2/3' in the first measure of the piano staff. The system ends with a double bar line.

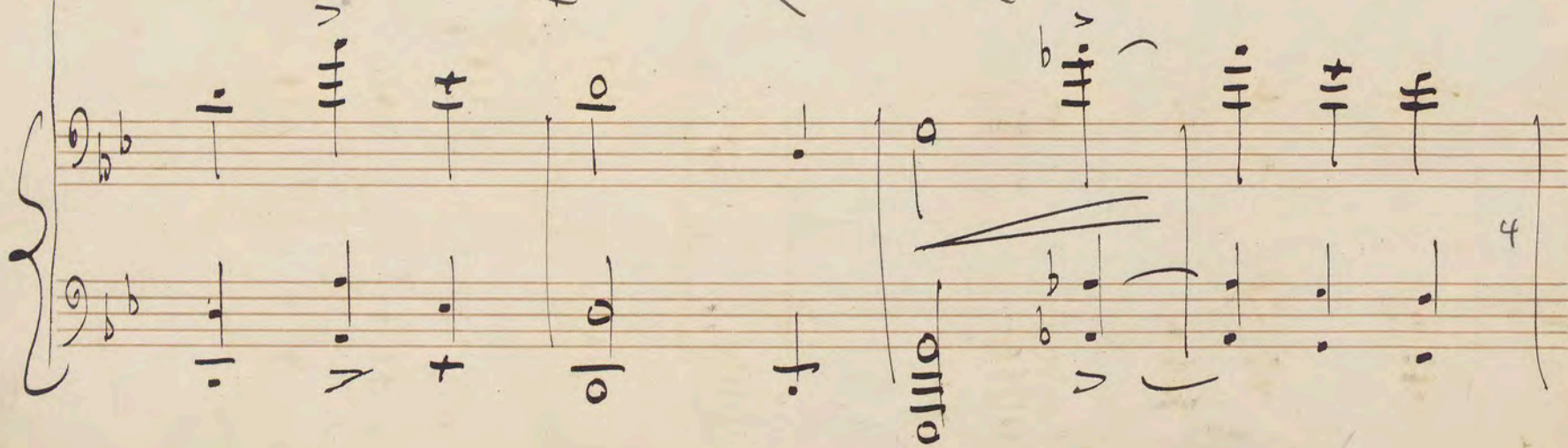
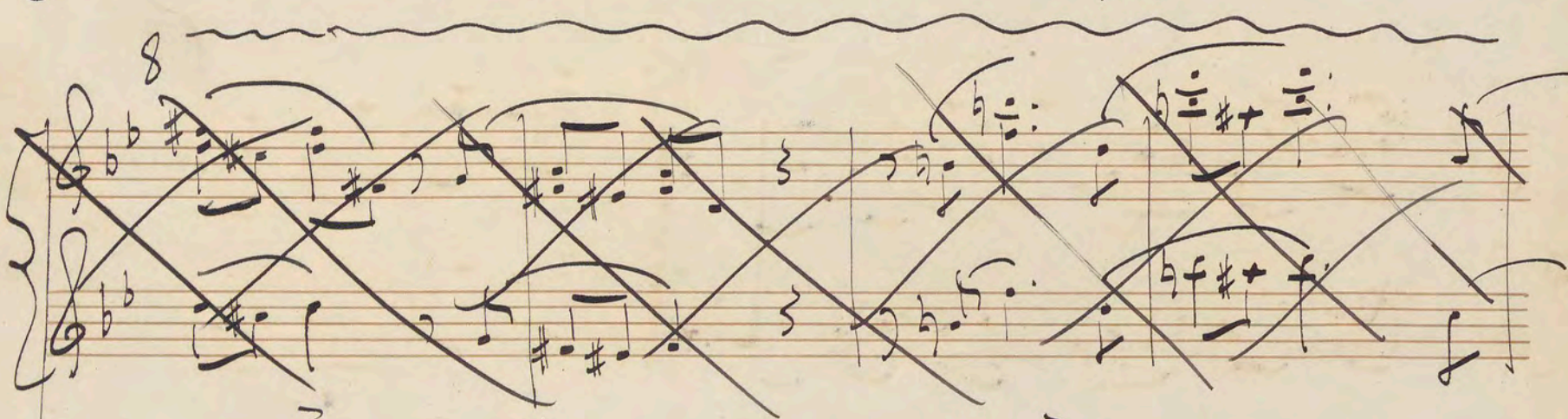
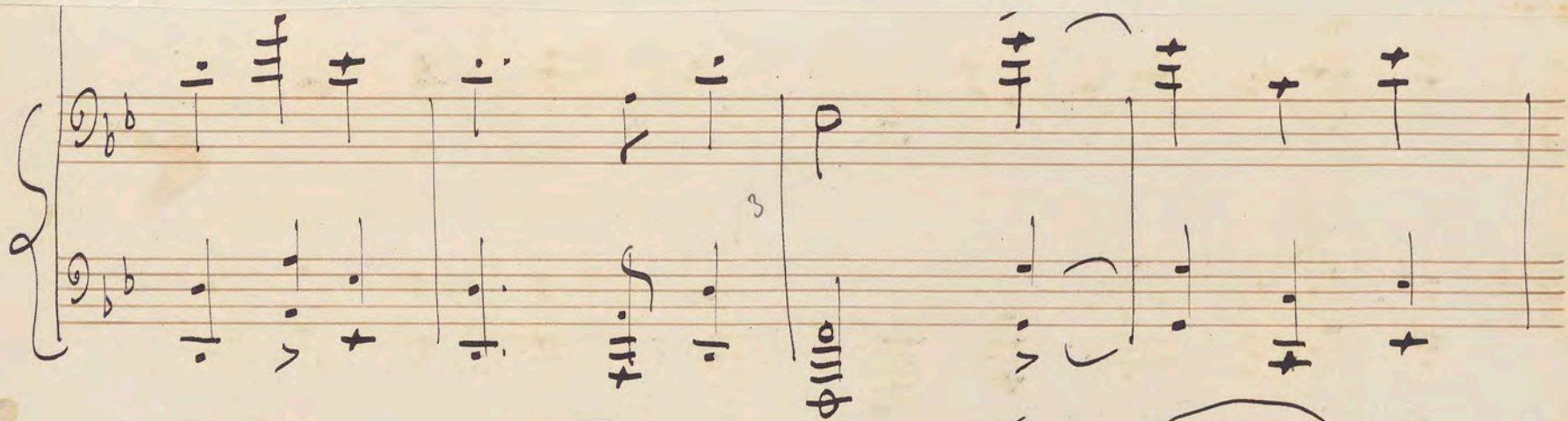
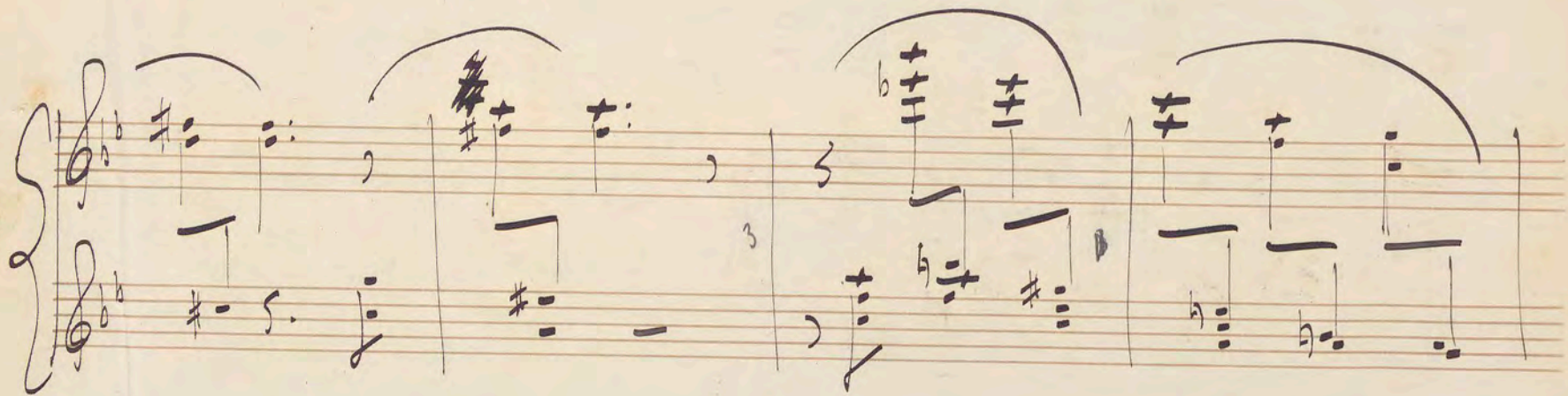




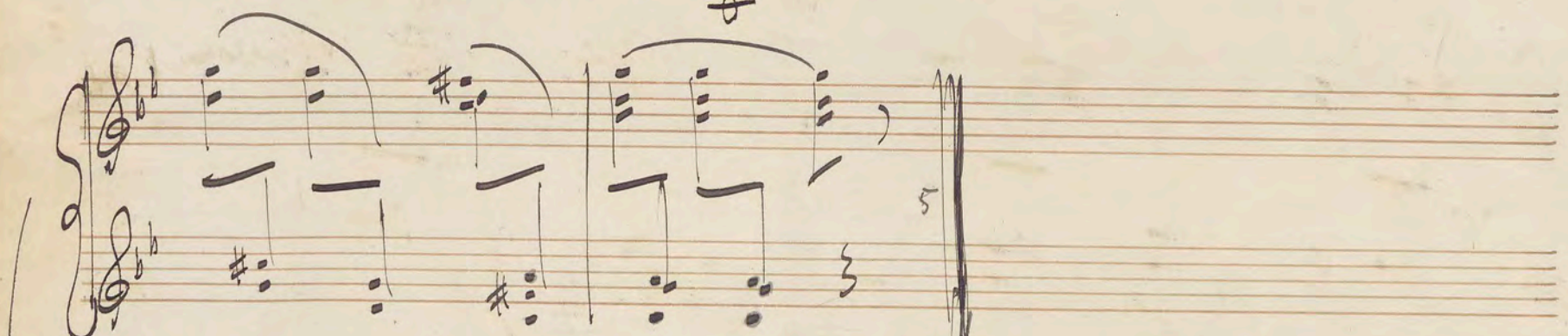
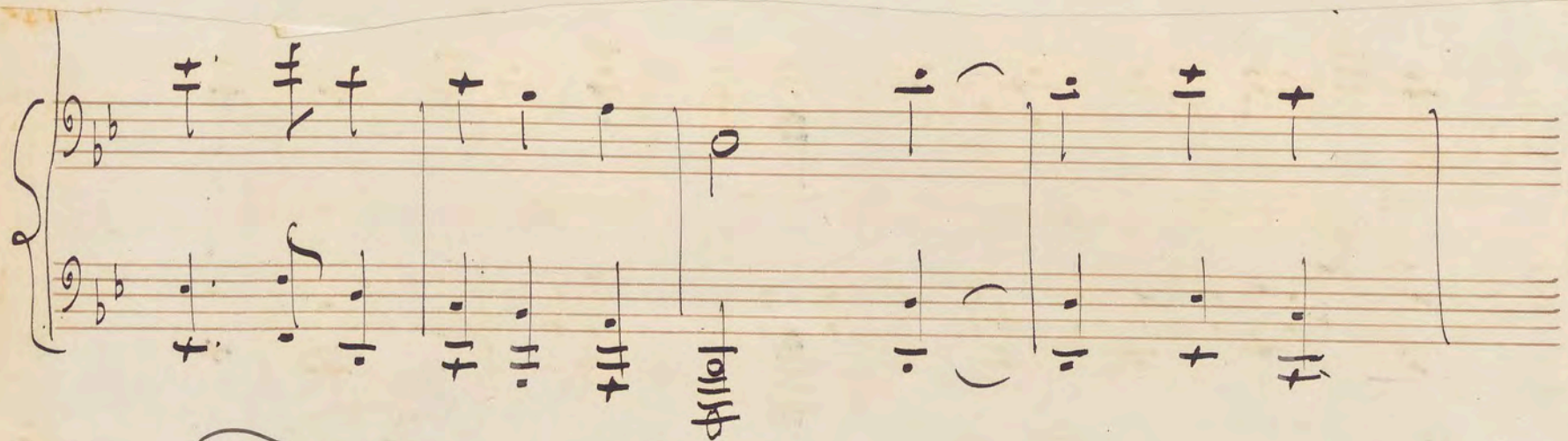
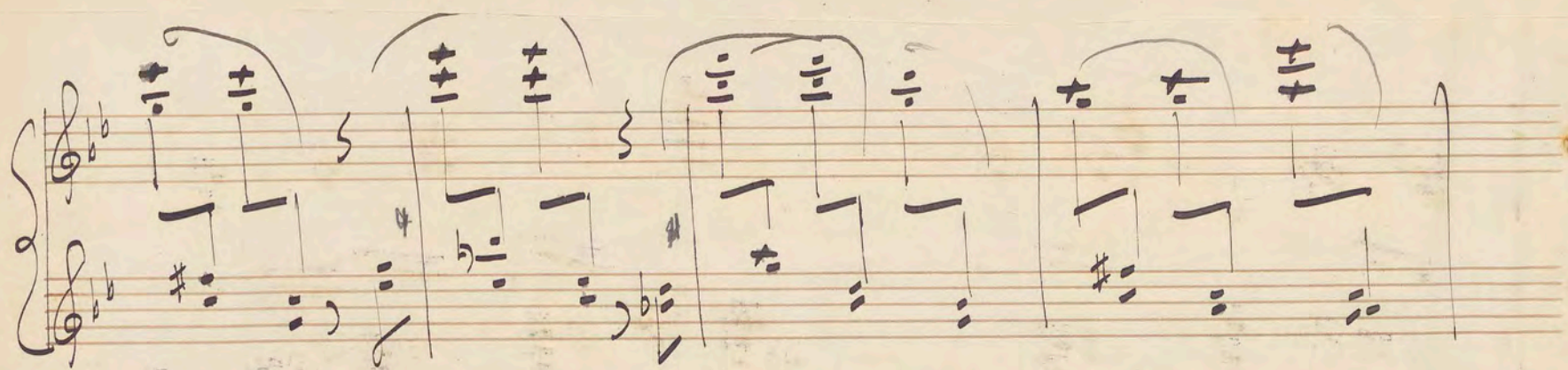










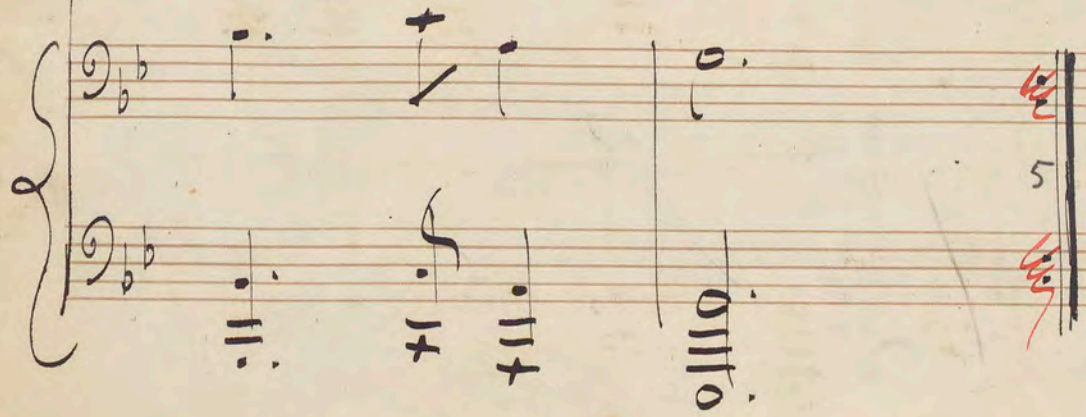


Folgt

A-B

über der

Prinzipaltonung zeigen





~~No. 6.~~ Allegretto con moto <sup>VI</sup> M. M. ♩ = 120

Handwritten musical score for the first system. The score is written on two systems of staves. The top system consists of a grand staff (treble and bass clefs) and a piano part (treble and bass clefs). The bottom system consists of a grand staff (treble and bass clefs) and a piano part (treble and bass clefs). The key signature is B-flat major (two flats). The time signature is 2/4. The tempo is marked 'Allegretto con moto' and the metronome marking is 'M. M. ♩ = 120'. There are red markings: a large red 'X' over the first measure of the top system, a red 'C' below the first measure of the bottom system, and a red 'C' below the first measure of the piano part. The piano part features a series of chords and a diagonal line indicating a continuation or a break. The system ends with a double bar line and a circled '6' with '12/13' written next to it.

Handwritten musical score for the second system. The score is written on two systems of staves. The top system consists of a grand staff (treble and bass clefs) and a piano part (treble and bass clefs). The bottom system consists of a grand staff (treble and bass clefs) and a piano part (treble and bass clefs). The key signature is B-flat major (two flats). The time signature is 2/4. The tempo is marked 'Allegretto con moto' and the metronome marking is 'M. M. ♩ = 120'. The piano part features a series of chords and a diagonal line indicating a continuation or a break. The system ends with a double bar line and a circled '6' with '12/13' written next to it.



8

Handwritten musical score for piano, measures 8-13. The score is written on two staves. The key signature has four flats (B-flat, E-flat, A-flat, D-flat). The time signature is 3/4. The notation includes eighth and sixteenth notes, rests, and dynamic markings. The word "sempre" is written above the first measure of both staves, followed by a piano (p) dynamic marking. A wavy line above the staff indicates a fermata or a long note. A red number "7" is written below the first measure of the right staff. A diagonal line is drawn through the right staff in measure 11. A red number "3" is written at the end of the system.

sempre p 7 3

Two empty musical staves, each consisting of five lines.

8

Handwritten musical score for piano, measures 14-19. The score is written on two staves. The key signature has four flats (B-flat, E-flat, A-flat, D-flat). The time signature is 3/4. The notation includes eighth and sixteenth notes, rests, and dynamic markings. A wavy line above the staff indicates a fermata or a long note. A red number "3" is written below the first measure of the right staff. A red number "2" is written below the second measure of the right staff. A diagonal line is drawn through the right staff in measure 18. A red number "4" is written at the end of the system.

3 2 4



Handwritten musical score for the first system, measures 40-45. The system consists of two staves. The upper staff is in treble clef with a key signature of three flats (B-flat, E-flat, A-flat) and a common time signature. It contains six measures of music, with the first measure starting with a treble clef and a key signature change. The lower staff is in bass clef with a key signature of three flats and a common time signature. It contains six measures of music, with the first measure starting with a bass clef and a key signature change. The music is written in a cursive, handwritten style. There are some annotations in the first measure of the upper staff, including a '40' and a '41'.

Two empty musical staves, each consisting of five lines, positioned below the first system of music.

Handwritten musical score for the second system, measures 46-51. The system consists of two staves. The upper staff is in treble clef with a key signature of three flats and a common time signature. It contains six measures of music, with the first measure starting with a treble clef and a key signature change. The lower staff is in bass clef with a key signature of three flats and a common time signature. It contains six measures of music, with the first measure starting with a bass clef and a key signature change. The music is written in a cursive, handwritten style. There are some annotations in the first measure of the upper staff, including a '3' and a '5'. There are also some annotations in the first measure of the lower staff, including a '3' and a '5'. The system ends with a double bar line and a '5' in the upper right corner.



Handwritten musical notation on a grand staff (treble and bass clefs). The music is in 8/9 time, indicated by a red '8' above the first measure. The notation includes various notes, rests, and accidentals. A red '4' is written below the second measure of the bass staff.

Handwritten musical notation on a grand staff. The notation includes various notes, rests, and accidentals. A red '4' is written below the second measure of the bass staff.

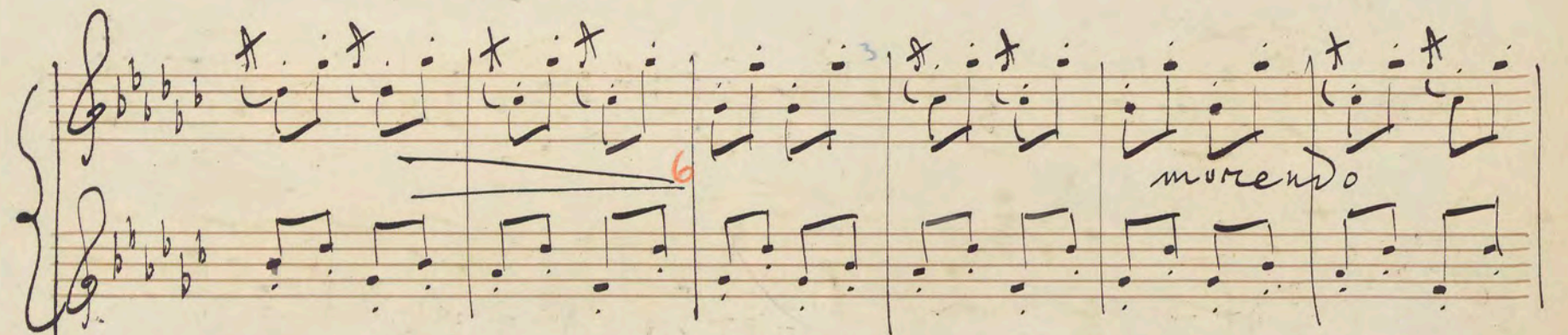
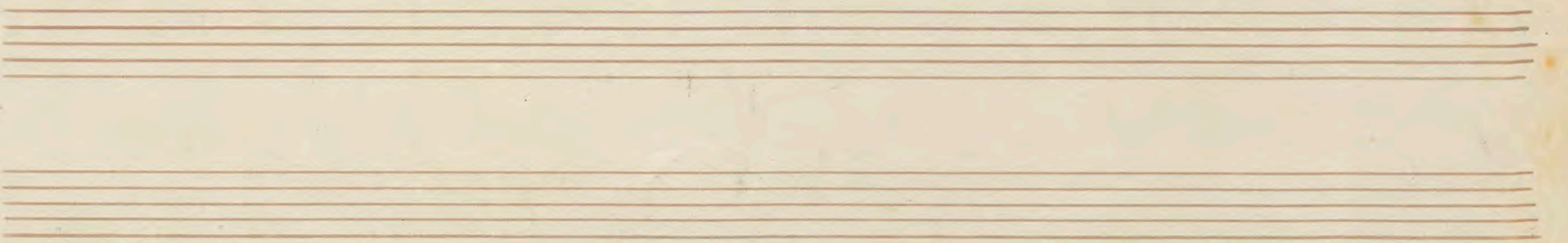
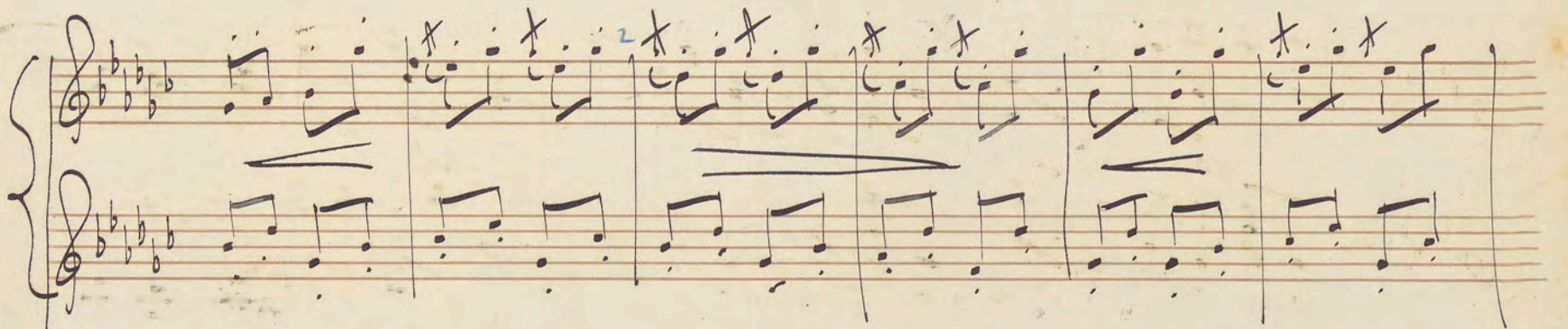
Two empty musical staves, likely for additional notation or a second system.

Handwritten musical notation on a grand staff. The music is in 8/9 time, indicated by a red '8' above the first measure. The notation includes various notes, rests, and accidentals. A red '5' is written below the last measure of the bass staff.

Handwritten musical notation on a grand staff. The notation includes various notes, rests, and accidentals. A red '5' is written below the last measure of the bass staff.



8





Handwritten musical score for piano, measures 1-8. The score is written on two systems of grand staves. The first system contains measures 1-4, and the second system contains measures 5-8. The music is in a key with three flats (B-flat, E-flat, A-flat) and a common time signature. The notation includes various note values, rests, and dynamic markings. There are red ink corrections and markings above and below the staves.

Measure 1: Treble staff has a quarter note G4, quarter note A4, quarter note B4, and quarter note C5. Bass staff has a quarter note F3, quarter note G3, quarter note A3, and quarter note B3. Dynamic: *poco rit.*

Measure 2: Treble staff has a quarter note C5, quarter note B4, quarter note A4, and quarter note G4. Bass staff has a quarter note B3, quarter note A3, quarter note G3, and quarter note F3. Dynamic: *poco rit.*

Measure 3: Treble staff has a quarter note G4, quarter note A4, quarter note B4, and quarter note C5. Bass staff has a quarter note F3, quarter note G3, quarter note A3, and quarter note B3. Dynamic: *poco rit.*

Measure 4: Treble staff has a quarter note C5, quarter note B4, quarter note A4, and quarter note G4. Bass staff has a quarter note B3, quarter note A3, quarter note G3, and quarter note F3. Dynamic: *poco rit.*

Measure 5: Treble staff has a quarter note G4, quarter note A4, quarter note B4, and quarter note C5. Bass staff has a quarter note F3, quarter note G3, quarter note A3, and quarter note B3. Dynamic: *mf*

Measure 6: Treble staff has a quarter note C5, quarter note B4, quarter note A4, and quarter note G4. Bass staff has a quarter note B3, quarter note A3, quarter note G3, and quarter note F3. Dynamic: *mf*

Measure 7: Treble staff has a quarter note G4, quarter note A4, quarter note B4, and quarter note C5. Bass staff has a quarter note F3, quarter note G3, quarter note A3, and quarter note B3. Dynamic: *mf*

Measure 8: Treble staff has a quarter note C5, quarter note B4, quarter note A4, and quarter note G4. Bass staff has a quarter note B3, quarter note A3, quarter note G3, and quarter note F3. Dynamic: *mf*

Handwritten musical score for piano, measures 9-16. The score is written on two systems of grand staves. The first system contains measures 9-12, and the second system contains measures 13-16. The music is in a key with three flats (B-flat, E-flat, A-flat) and a common time signature. The notation includes various note values, rests, and dynamic markings. There are blue ink markings and red ink corrections.

Measure 9: Treble staff has a quarter note G4, quarter note A4, quarter note B4, and quarter note C5. Bass staff has a quarter note F3, quarter note G3, quarter note A3, and quarter note B3.

Measure 10: Treble staff has a quarter note C5, quarter note B4, quarter note A4, and quarter note G4. Bass staff has a quarter note B3, quarter note A3, quarter note G3, and quarter note F3.

Measure 11: Treble staff has a quarter note G4, quarter note A4, quarter note B4, and quarter note C5. Bass staff has a quarter note F3, quarter note G3, quarter note A3, and quarter note B3.

Measure 12: Treble staff has a quarter note C5, quarter note B4, quarter note A4, and quarter note G4. Bass staff has a quarter note B3, quarter note A3, quarter note G3, and quarter note F3.

Measure 13: Treble staff has a quarter note G4, quarter note A4, quarter note B4, and quarter note C5. Bass staff has a quarter note F3, quarter note G3, quarter note A3, and quarter note B3.

Measure 14: Treble staff has a quarter note C5, quarter note B4, quarter note A4, and quarter note G4. Bass staff has a quarter note B3, quarter note A3, quarter note G3, and quarter note F3.

Measure 15: Treble staff has a quarter note G4, quarter note A4, quarter note B4, and quarter note C5. Bass staff has a quarter note F3, quarter note G3, quarter note A3, and quarter note B3.

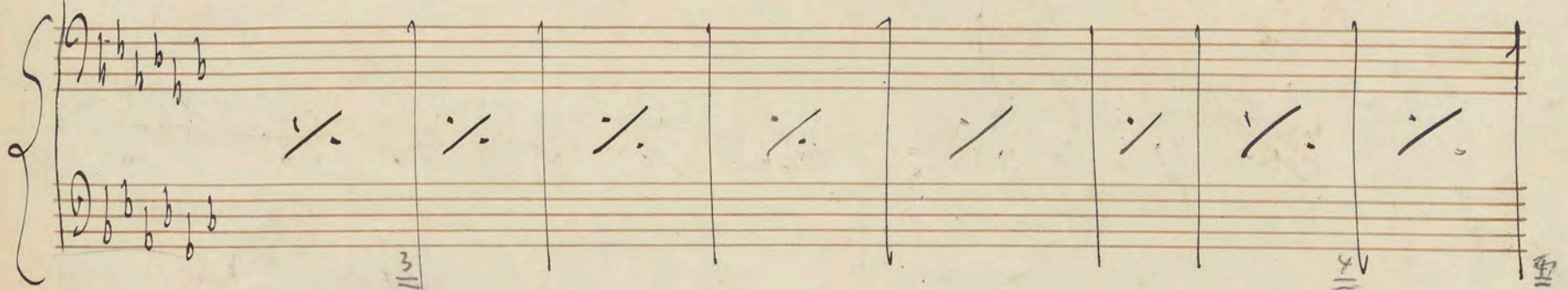
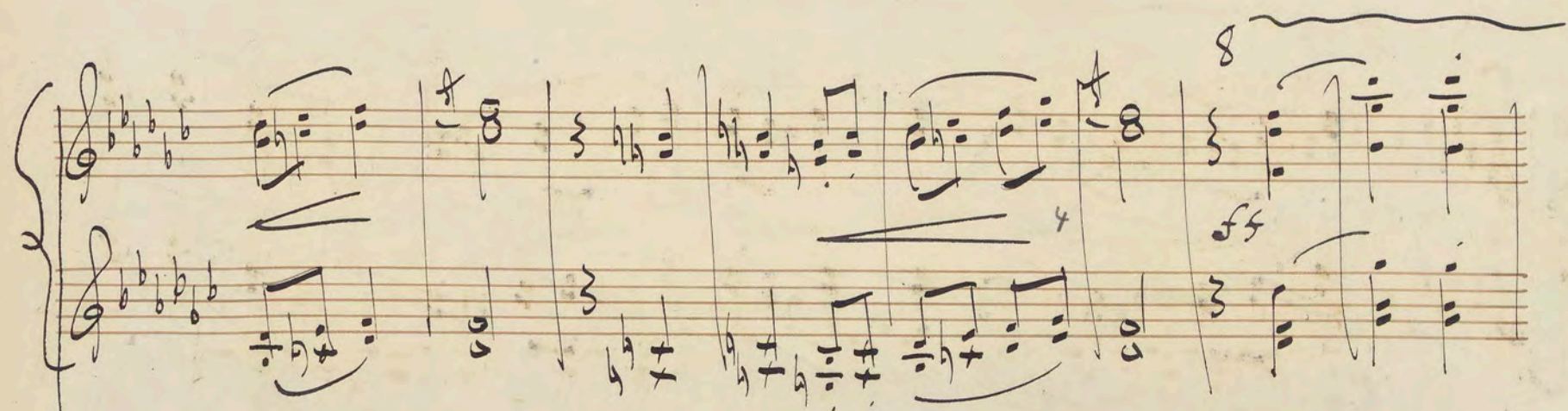
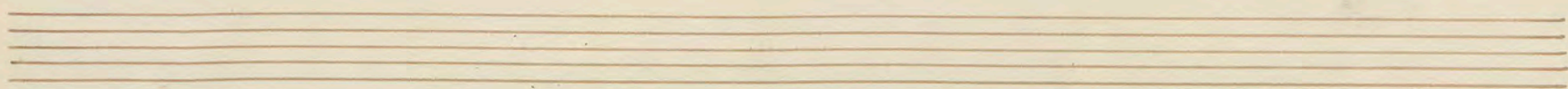
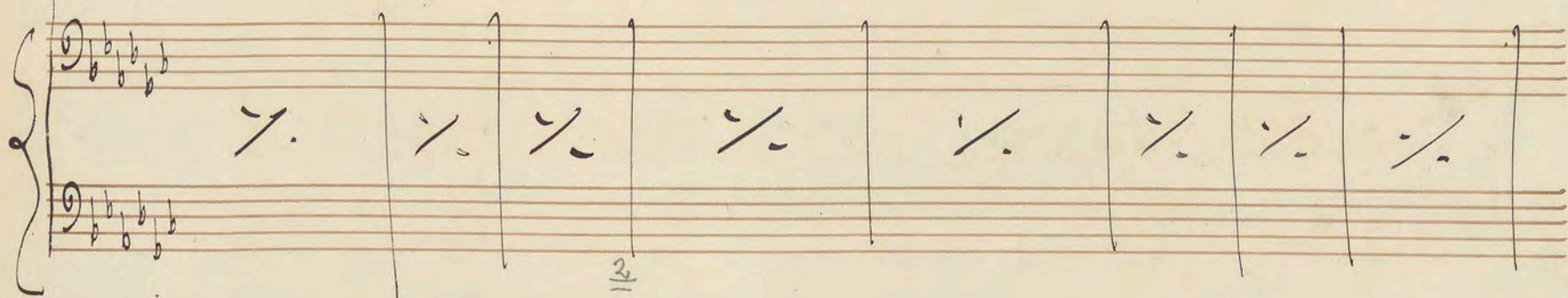
Measure 16: Treble staff has a quarter note C5, quarter note B4, quarter note A4, and quarter note G4. Bass staff has a quarter note B3, quarter note A3, quarter note G3, and quarter note F3.



Handwritten musical score on page 18, system 1. The system consists of two grand staves. The upper grand staff has two treble clefs and contains complex melodic and harmonic notation with many beamed notes and slurs. The lower grand staff has two bass clefs and contains a series of chords, many of which are marked with a diagonal slash. There are blue ink annotations: a '6' above a measure in the lower staff and a '10/11' with a blue underline below a measure in the lower staff. A wavy line is drawn above the first staff.

Handwritten musical score on page 18, system 2. The system consists of two grand staves. The upper grand staff has two treble clefs and contains complex melodic and harmonic notation with many beamed notes and slurs. The lower grand staff has two bass clefs and contains a series of chords, many of which are marked with a diagonal slash. There are blue ink annotations: a '1' above a measure in the lower staff and a '10/11' with a blue underline below a measure in the lower staff. A wavy line is drawn above the first staff.







8

dim.



Handwritten musical score on two staves, heavily crossed out with red ink. The notation includes treble and bass clefs, key signatures, and various musical symbols. A large red 'X' is drawn across the entire system. Above the first staff, there is a handwritten '8' and a wavy line. The second staff contains several measures with a diagonal slash, indicating a section that has been removed or is to be replaced.

Handwritten musical score on two staves, also heavily crossed out with red ink. The notation includes treble and bass clefs, key signatures, and various musical symbols. A large red 'X' is drawn across the entire system. Above the first staff, there is a handwritten '8' and a wavy line. The second staff contains several measures with a diagonal slash, indicating a section that has been removed or is to be replaced. To the right of the staves, there are handwritten notes: 'Schluss' (top), 'dann' (middle), and 'Schluss' (bottom). There are also some red markings and a small '7' written in red ink. At the bottom right, there are two small fractions:  $\frac{14}{15}$  and  $\frac{14}{15}$ .







Handwritten musical score on page 23, measures 1-6. The score is in D major (two sharps) and 3/4 time. It features a piano (p) dynamic and a crescendo (cresc.) marking. The right hand has a melodic line with some red corrections. The left hand has a bass line with some red corrections and a section that is heavily crossed out with red ink. A red '5' is written below the first measure of the left hand. A red '2' is written above the second measure of the right hand. A red 'cresc.' is written above the third measure of the right hand. A red 'p' is written below the first measure of the right hand. A red 'cresc.' is written below the third measure of the left hand. A red 'rechte H.' is written below the first measure of the right hand.

Handwritten musical score on page 23, measures 7-12. The score is in D major (two sharps) and 3/4 time. It features a piano (p) dynamic and a crescendo (cresc.) marking. The right hand has a melodic line with some red corrections. The left hand has a bass line with some red corrections and a section that is heavily crossed out with red ink. A red '5' is written below the first measure of the left hand. A red '2' is written above the second measure of the right hand. A red 'cresc.' is written above the third measure of the right hand. A red 'p' is written below the first measure of the right hand. A red 'cresc.' is written below the third measure of the left hand. A red 'rechte H.' is written below the first measure of the right hand.

I. bleibt bei der Wiederholung weg.





Handwritten musical score for two staves, featuring a key signature of two sharps (F# and C#) and a 3/4 time signature. The notation includes various notes, rests, and dynamic markings. A large section of the first staff is crossed out with red ink, marked with a red 'X' and a red arrow. The second staff contains a red 'X' and a red arrow pointing to a specific measure. The word "rit." (ritardando) is written above the second staff. The score is written in black ink on aged paper.

Handwritten musical score for two staves, featuring a key signature of two sharps (F# and C#) and a 3/4 time signature. The notation includes various notes, rests, and dynamic markings. The word "f" (forte) is written above the first staff. The score is written in black ink on aged paper.

Handwritten musical score for two staves, featuring a key signature of two sharps (F# and C#) and a 3/4 time signature. The notation includes various notes, rests, and dynamic markings. The word "f" (forte) is written above the first staff. The word "cresc." (crescendo) is written above the second staff. The score is written in black ink on aged paper.



Handwritten musical notation on a grand staff (treble and bass clefs). The key signature has two sharps (F# and C#). The notation includes various notes, rests, and wavy lines. A wavy line with the number '8' is written above the staff. The piece ends with a double bar line.

Handwritten musical notation on a grand staff. The key signature has two sharps. The notation includes various notes, rests, and wavy lines. A wavy line with the number '8' is written above the staff. The piece ends with a double bar line.

Empty musical staves.

Handwritten musical notation on a grand staff. The key signature has two sharps. The notation includes various notes, rests, and wavy lines. A wavy line with the number '8' is written above the staff. The piece ends with a double bar line.

Handwritten musical notation on a grand staff. The key signature has two sharps. The notation includes various notes, rests, and wavy lines. A wavy line with the number '8' is written above the staff. The piece ends with a double bar line.



Handwritten musical score for two staves in treble clef, key of D major. The first staff has a whole rest. The second staff has a whole rest. A bracket above the second staff indicates a measure rest for 8 measures. The system ends with a double bar line and a red '2' above the staff.

Handwritten musical score for two staves in treble clef, key of D major. The first staff has a whole note chord (F#4, A#4, C#5). The second staff has a whole note chord (F#3, A#3, C#4). A bracket above the first staff indicates a measure rest for 8 measures. The system ends with a double bar line and a red '2' above the staff.

Two empty musical staves.

Handwritten musical score for two staves in treble clef, key of D major. The first staff has a whole note chord (F#4, A#4, C#5). The second staff has a whole note chord (F#3, A#3, C#4). A bracket above the first staff indicates a measure rest for 8 measures. The system ends with a double bar line and a red '2' above the staff.

Handwritten musical score for two staves in treble clef, key of D major. The first staff has a whole note chord (F#4, A#4, C#5). The second staff has a whole note chord (F#3, A#3, C#4). A bracket above the first staff indicates a measure rest for 8 measures. The system ends with a double bar line and a red '2' above the staff.



Handwritten musical notation on a grand staff (treble and bass clefs). The key signature has two sharps (F# and C#). The notation includes various notes, rests, and dynamic markings. A large '8' is written above the first measure. The piece concludes with a double bar line.

Handwritten musical notation on a grand staff. The key signature has two sharps. The notation includes various notes, rests, and dynamic markings. The piece concludes with a double bar line.

Two empty musical staves.

Handwritten musical notation on a grand staff. The key signature has two sharps. The notation includes various notes, rests, and dynamic markings. A large '8' is written above the first measure. The piece concludes with a double bar line.

Handwritten musical notation on a grand staff. The key signature has two sharps. The notation includes various notes, rests, and dynamic markings. A large '3' is written above the first measure. The piece concludes with a double bar line.



Handwritten musical score on two systems. The first system consists of two staves (treble and bass clef) with a key signature of two sharps (F# and C#). The music is heavily edited with red ink, including large red scribbles over the first few measures and a red '3' above a measure. The second system also has two staves, with a 'rit. 6' marking and a red '5' above a measure. There are various musical notations including notes, rests, and dynamic markings like 'f'.

Handwritten musical score on two systems. The first system consists of two staves (treble and bass clef) with a key signature of two sharps (F# and C#). The music is heavily edited with red ink, including large red scribbles over the first few measures and a red '4' above a measure. The second system also has two staves, with a 'cresc.' marking and a red '4' above a measure. There are various musical notations including notes, rests, and dynamic markings like 'cresc.'.



Handwritten musical score on page 29, measures 1-8. The score is written in treble and bass staves with a key signature of two sharps (F# and C#). Measures 1-4 show complex chordal textures with many beamed notes and accidentals. Measures 5-8 continue the texture, with some notes marked with a red '5' and a red 'x'.

Handwritten musical score on page 29, measures 9-16. Measures 9-12 show a continuation of the complex textures, with some notes marked with a red '5' and a blue '2'. Measures 13-16 show a more melodic line in the upper staff, with some notes marked with a red '5' and a red 'x'. The lower staff continues with complex textures, including some notes marked with a red '5' and a red 'x'.



Handwritten musical score for a piano piece, featuring two systems of staves. The top system has two staves with treble and bass clefs, and the bottom system has two staves with treble and bass clefs. The music is written in G major (one sharp) and 6/8 time. The score includes various musical notations such as notes, rests, and dynamic markings like 'f' (forte) and 'ff appassionato' (fortissimo appassionato). There are significant red markings, including a large 'X' at the bottom left, red arrows, and red scribbles over parts of the music, indicating corrections or deletions. The page is numbered '6' in the bottom right corner.

Handwritten musical score for "The Rose Tree" in G major. The score is written on two staves, Treble and Bass. The key signature is one sharp (F#), and the time signature is 3/4. The music is written in a simple, handwritten style. The Treble staff contains the melody, and the Bass staff contains the accompaniment. The score includes various musical notations such as notes, rests, and a large blacked-out section in the middle of the Bass staff. The piece is marked with a large '8' at the beginning of the Treble staff.

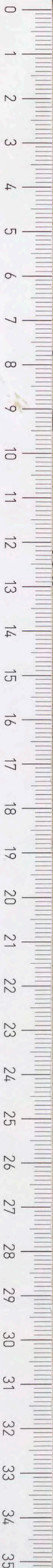


aber ohne









*Zum Riß*

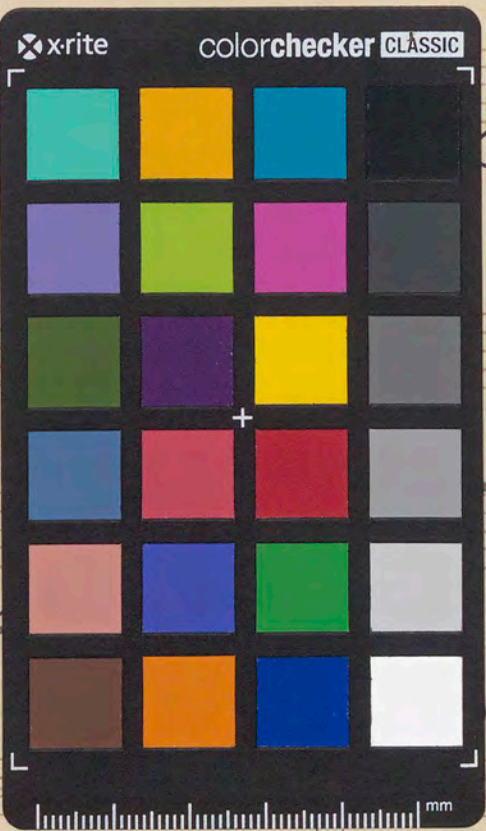
FPJ 6a

*36652*

*Handwritten signature/initials*

*Angewandte*

*zu vier Händen*



*zu vier Händen*

I Hefz	N <sup>o</sup>	1	pag 2-3	} M. 3
		2	" 4-9	
		3	" 10-17	
		4	" 18-19	
II Hefz	N <sup>o</sup>	5	pag 2-7	} M. 3 -
		6	" 8-15	
		7	" 16-21	